

TEL: 977-015718027 977-015718014 AFTN : VNKTYOYX Email: caanais@caanepal.gov.np Website : caanepal.gov.np	NEPAL AERONAUTICAL INFORMATION MANAGEMENT DEPARTMENT CIVIL AVIATION AUTHORITY OF NEPAL SINAMANGAL, KATHMANDU	AIRAC AIP AMENDMENT 06/26 28 May 2026
--	---	--

EFFECTIVE DATE : 9 JULY 2026

1. Contents

- 1.1 PBN Flight Procedure of Nepalgunj Airport (VNNG).
2. On 9 July 2026, remove and insert following pages.

Remove the following pages:		Insert the following pages:	
GENERAL (GEN)			
GEN 0.4-8	26 MAY 2026	GEN 0.4-8	9 JULY 2026
AERODROME (AD)			
VNNG AD			
.....	VNNG AD 2- 25	9 JULY 2026
.....	VNNG AD 2- 26	9 JULY 2026
.....	VNNG AD 2- 27	9 JULY 2026
.....	VNNG AD 2- 28	9 JULY 2026
.....	VNNG AD 2- 29	9 JULY 2026
.....	VNNG AD 2- 30	9 JULY 2026
.....	VNNG AD 2- 31	9 JULY 2026
.....	VNNG AD 2- 32	9 JULY 2026
.....	VNNG AD 2- 33	9 JULY 2026
.....	VNNG AD 2- 34	9 JULY 2026
.....	VNNG AD 2- 35	9 JULY 2026
.....	VNNG AD 2- 36	9 JULY 2026
.....	VNNG AD 2- 37	9 JULY 2026
.....	VNNG AD 2- 38	9 JULY 2026
.....	VNNG AD 2- 39	9 JULY 2026
.....	VNNG AD 2- 40	9 JULY 2026
.....	VNNG AD 2- 41	9 JULY 2026
.....	VNNG AD 2- 42	9 JULY 2026

VNNG AD 2	VNNG AD 2 – 1	3 DECEMBER 2023	VNPR AD 2 – 6	23 FEBRUARY 2023	
	VNNG AD 2 – 2	30 APRIL 2025	VNPR AD 2 – 7	23 FEBRUARY 2023	
	VNNG AD 2 – 3	26 MAY 2026	VNPR AD 2 – 8	23 FEBRUARY 2023	
	VNNG AD 2 – 4	26 MAY 2026			
	VNNG AD 2 – 5	26 MAY 2026	VNPR AD 2 – 9	23 FEBRUARY 2023	
	VNNG AD 2 – 6	26 MAY 2026	VNPR AD 2 – 10	23 FEBRUARY 2023	
	VNNG AD 2 – 7	26 MAY 2026	VNPR AD 2 – 11	23 FEBRUARY 2023	
	VNNG AD 2 – 8	26 MAY 2026	VNPR AD 2 – 12	23 FEBRUARY 2023	
	VNNG AD 2 – 9	26 MAY 2026	VNPR AD 2 – 13	23 FEBRUARY 2023	
	VNNG AD 2 – 10	26 MAY 2026	VNPR AD 2 – 14	23 FEBRUARY 2023	
	VNNG AD 2 – 11	9 JULY 2026	VNPR AD 2 – 15	23 FEBRUARY 2023	
	VNNG AD 2 – 12	26 MAY 2026	VNPR AD 2 – 16	23 FEBRUARY 2023	
	VNNG AD 2 – 13	26 MAY 2026	VNPR AD 2 – 17	23 FEBRUARY 2023	
	VNNG AD 2 – 14	26 MAY 2026	VNPR AD 2 – 18	23 FEBRUARY 2023	
	VNNG AD 2 – 15	26 MAY 2026	VNPR AD 2 – 19	23 FEBRUARY 2023	
	VNNG AD 2 – 16	26 MAY 2026	VNPR AD 2 – 20	30 APRIL 2025	
	VNNG AD 2 – 17	26 MAY 2026	VNPR AD 2 – 21	30 APRIL 2024	
	VNNG AD 2 – 18	26 MAY 2026	VNPR AD 2 – 22	23 FEBRUARY 2023	
	VNNG AD 2 – 19	26 MAY 2026	VNPR AD 2 – 23	30 APRIL 2025	
	VNNG AD 2 – 20	26 MAY 2026	VNPR AD 2 – 24	23 FEBRUARY 2023	
	VNNG AD 2 – 21	26 MAY 2026	VNPR AD 2 – 25	23 FEBRUARY 2023	
	VNNG AD 2 – 22	26 MAY 2026	VNPR AD 2 – 26	26 JANUARY 2025	
	VNNG AD 2 – 23	26 MAY 2026	VNPR AD 2 – 27	23 FEBRUARY 2023	
	VNNG AD 2 – 24	26 MAY 2026	VNPR AD 2 – 28	23 MARCH 2023	
	VNNG AD 2 – 25	9 JULY 2026	VNPR AD 2 – 29	27 JUNE 2024	
	VNNG AD 2 – 26	9 JULY 2026	VNPR AD 2 – 30	30 APRIL 2024	
	VNNG AD 2 – 27	9 JULY 2026	VNPR AD 2 – 31	30 APRIL 2024	
	VNNG AD 2 – 28	9 JULY 2026	VNPR AD 2 – 32	30 APRIL 2024	
	VNNG AD 2 – 29	9 JULY 2026	VNPR AD 2 – 33	30 APRIL 2024	
	VNNG AD 2 – 30	9 JULY 2026	VNPR AD 2 – 34	21 AUGUST 2023	
	VNNG AD 2 – 31	9 JULY 2026	VNPR AD 2 – 35	3 DECEMBER 2023	
	VNNG AD 2 – 32	9 JULY 2026	VNPR AD 2 – 36	23 MARCH 2023	
	VNNG AD 2 – 33	9 JULY 2026	VNPR AD 2 – 37	4 SEPTEMBER 2025	
	VNNG AD 2 – 34	9 JULY 2026	VNPR AD 2 – 38	23 MARCH 2023	
	VNNG AD 2 – 35	9 JULY 2026			
	VNNG AD 2 – 36	9 JULY 2026			
	VNNG AD 2 – 37	9 JULY 2026			
	VNNG AD 2 – 38	9 JULY 2026			
	VNNG AD 2 – 39	9 JULY 2026			
	VNNG AD 2 – 40	9 JULY 2026			
	VNNG AD 2 – 41	9 JULY 2026			
VNNG AD 2 – 42	9 JULY 2026				
VNPK AD 2	VNPK AD 2 – 1	27 JUNE 2024	VNRB AD 2	VNRB AD 2 – 1	01 JULY 2022
	VNPK AD 2 – 2	23 MARCH 2023		VNRB AD 2 – 2	30 APRIL 2025
	VNPK AD 2 – 3	JUNE 2024		VNRB AD 2 – 3	01 JULY 2022
	VNPK AD 2 – 4	27 JUNE 2024		VNRB AD 2 – 4	01 JULY 2022
	VNPK AD 2 – 5	27 JUNE 2024		VNRB AD 2 – 5	26 JANUARY 2025
	VNPK AD 2 – 6	20 NOVEMBER 2025		VNRB AD 2 – 6	01 JULY 2022
	VNPK AD 2 – 7	01 JULY 2022		VNRB AD 2 – 7	01 JULY 2022
	VNPK AD 2 – 8	27 JUNE 2024		VNRB AD 2 – 8	01 JULY 2022
	VNPK AD 2 – 9	27 JUNE 2024		VNRB AD 2 – 9	01 JULY 2022
	VNPK AD 2 – 10	27 JUNE 2024		VNRB AD 2 – 10	01 JULY 2022
	VNPK AD 2 – 11	27 JUNE 2024		VNRB AD 2 – 11	01 JULY 2022
	VNPK AD 2 – 12	01 JULY 2022		VNRB AD 2 – 12	01 JULY 2022
	VNPK AD 2 – 13	30 APRIL 2023		VNRB AD 2 – 13	01 JULY 2022
	VNPK AD 2 – 14	3 DECEMBER 2023		VNRB AD 2 – 14	01 JULY 2022
	VNPK AD 2 – 15	23 FEBRUARY 2023		VNRB AD 2 – 15	01 JULY 2022
VNPR AD 2	VNPR AD 2 – 1	27 JUNE 2024	VNRB AD 2 – 16	01 JULY 2022	
	VNPR AD 2 – 2	26 JANUARY 2025	VNRB AD 2 – 17	01 JULY 2022	
	VNPR AD 2 – 3	27 JUNE 2024			
	VNPR AD 2 – 4	23 FEBRUARY 2023			
	VNPR AD 2 – 5	23 FEBRUARY 2023			

RNP Approach Procedures at Nepalgunj Airport (VNNG)

1. INTRODUCTION

- 1.1 The following RNP1 SIDs/STARs and RNP APCH and associated Missed Approach Procedures are designed for VNNG in accordance with the criteria as stipulated in the ICAO PANS-OPS (DOC 8168 Vol. II).
- 1.2 The RNP1 SIDs/STARs and RNP APCH Procedures at VNNG is designed to enhance the safety and efficiency of the aircraft operations to materialize the National PBN Implementation Plan of Nepal.
- 1.3 Two RNP approach procedure with (LNAV/VNAV, LNAV Only) along with two RNP1 STARs and ten RNP1 SIDs have been designed which utilizes GNSS as a navigation system as stipulated in ICAO PBN Manual DOC 9613.
- 1.4 A full arrival, approach and missed approach trajectories along with associated holding have been designed.

2. APPROVED USERS, EQUIPMENT AND OPERATIONS

- 2.1 For the RNP1 SIDs/STARs, RNP APCH and associated Missed Approach, the operators shall ensure that they hold all necessary operational approval from Civil Aviation Authority of Nepal (CAAN).
- 2.2 The aircraft shall be equipped with GNSS as specified in Nepalese Flight Operations Requirements (FOR).
- 2.3 All necessary navigation system are to be installed onboard so as to keep the track keeping accuracy while commencing RNP1, RNP APCH and associated Missed Approach.
- 2.4 Before commencing the procedure, pilot in command must ensure that the navigation database is current and the aircraft's capability of conducting the procedure like GNSS availability, system performance, etc.

3. NAMING OF PROCEDURES

There are two RNP1 STARs, ten RNP1 SIDs and two RNP APCH ((LNAV/VNAV, LNAV Only) procedures for Nepalgunj Runway 08 and another for Nepalgunj Runway 26 and are named in accordance with the ICAO naming convention as tabulated below.

4. RNP CAPABILITY LOST

If the RNP Approach capability is lost, ATC shall be informed as soon as possible the alternate course of action from the pilots of the concerned aircraft.

5. List of Significant points:

Waypoint Identifier	Coordinates	
TULVI	28°06'42.00" N	082°17'30.00" E
UPKOB	28°04' 57.41" N	081°57' 00.35" E
NG102	28°07' 52.21" N	081°51' 47.47" E
NG101	28°07' 08.24" N	081°46' 33.44" E
LILKO	28°14' 52.00" N	081°36' 34.00" E
IVSOM	28°15' 30.00" N	081°35'11.00" E
NG203	28°12' 15.88" N	081°27' 57.42" E
NG202	28°05' 07.53" N	081°32' 18.92" E
NG201	28°05' 38.35" N	081°35' 56.02" E
NG401	28°17' 01.84" N	081°52' 21.53" E
NG402	28°15' 11.12" N	082°15' 37.37" E
THARA	27°57' 20.00" N	083°00' 00.00" E
PUBOB	28°08' 40.00" N	083°00' 00.00" E
NG501	28°06' 52.05" N	081°44' 38.19" E
ENVAD	28°06' 27.14" N	082°01' 21.39" E
NG301	28°00' 23.02" N	081°48' 21.22" E
NG302	27°58' 21.28" N	082°11' 49.50" E
NG303	27°55' 07.55" N	082°38' 47.32" E
NG304	28°07' 58.64" N	081°40' 27.78" E
RWY08	28°06' 08.20" N	081°39' 26.80" E
RWY26	28°06' 16.90" N	081°40' 28.42" E

6. Coding Table: TULVI 1A RWY08

Serial No.	Path Descriptor	Waypoint Identifier	Fly-over	Course/Track (*MT)	Magnetic Variation	Distance (NM)	Turn Direction	Altitude (ft)	Speed (kts)	VPA/TCH	Navigation Specification
001	IF	TULVI	-	-	-	-	-	+10500	-	-	RNP-1
002	TF	UPKOB	-	264° (264.5°)	-	18.2	-	+6000	-	-	RNP-1
003	TF	NG102	-	302°(302.2°)	-	5.4	-	-	-	-	RNP-1
004	TF	LILKO	-	297°(297.4°)	-	15.1	-	+6000	-	-	RNP-1

7. Coding Table: TULVI 1B RWY 26

<i>Serial No.</i>	<i>Path Descriptor</i>	<i>Waypoint Identifier</i>	<i>Fly-over</i>	<i>Course(*M/*T)</i>	<i>Magnetic Variation</i>	<i>Distance (NM)</i>	<i>Turn Direction</i>	<i>Altitude (ft)</i>	<i>Speed (kts)</i>	<i>VPA/TCH</i>	<i>Navigation Specification</i>
001	IF	TULVI	-	-	-	-	-	+10500	-	-	RNP-1
002	TF	UPKOB	-	264° (264.4)	-	18.2	-	+5500	-	-	RNP-1

8. Coding Table: RNP RWY 08 (LNAV/VNAV, LNAV Only)

<i>Serial No.</i>	<i>Path Descriptor</i>	<i>Waypoint Identifier</i>	<i>Fly-over</i>	<i>Course(*M)</i>	<i>Magnetic Variation</i>	<i>Distance (NM)</i>	<i>Turn Direction</i>	<i>Altitude (ft)</i>	<i>Speed (kts)</i>	<i>VPA/TCH</i>	<i>Navigation Specification</i>
001	IF	LILKO (IAF)	-	-	-	-	-	+6000	180	-	RNP APCH
002	TF	NG203	-	250°	-	8.0	-	-	-	-	RNP APCH
003	TF	NG202 (IF)	-	151°	-	8.0	-	+2100	-	-	RNP APCH
004	TF	NG201 (FAF)	-	080°	-	3.2	-	+1600	-	-	RNP APCH
005	TF	RWY08 (MAPt)	Y	080°	-	3.1	-	+ 562	-	3.00/50	RNP APCH
006	CA	RWY08 (MAPt)	-	080°	-	-	L	@2200	-	-	RNP APCH
007	DF	LILKO	-	-	-	-	-	+6000	-	-	RNP APCH
008	HM	LILKO (MAHF)	-	250°	-	-	R	+6000	180	-	RNP1

9. Coding Table: RNP RWY 26 (LNAV/VNAV, LNAV Only)

<i>Serial No.</i>	<i>Path Descriptor</i>	<i>Waypoint Identifier</i>	<i>Fly-over</i>	<i>Course (*M)</i>	<i>Magnetic Variation</i>	<i>Distance (NM)</i>	<i>Turn Direction</i>	<i>Altitude (ft)</i>	<i>Speed (kts)</i>	<i>VPA/TCH</i>	<i>Navigation Specification</i>
001	IF	UPKOB (IAF)	-	-	-	-	-	+5500	-	-	RNP APCH
002	TF	NG102 (IF)	-	302°	-	5.4	-	+3300	-	-	RNP APCH
003	TF	NG101 (FAF)	-	260°	-	4.7	-	+2300	-	-	RNP APCH
004	TF	RWY26	Y	260°	-	5.4	-	+565	-	3.00/50	RNP APCH
005	CA	RWY26	-	260°	-	-	R	@ 2000	-	-	RNP APCH
006	DF	LILKO	-	-	-	-	-	+6000	-	-	RNP APCH
007	HM	LILKO (MAHF)	-	250°	-	-	R	+6000	180	-	RNP1

10. Coding Table: SID THARA 1A RWY 08

<i>Serial No.</i>	<i>Path Descriptor</i>	<i>Waypoint Identifier</i>	<i>Flyover</i>	<i>Course/Track (*M)</i>	<i>Magnetic Variation</i>	<i>Distance (NM)</i>	<i>Turn Direction</i>	<i>Altitude (ft)</i>	<i>Speed (kts)</i>	<i>VPA/TCH</i>	<i>Navigation Specification</i>
001	CA	-	-	080°	-	-	R	@1000	-	-	RNP-1
002	DF	NG301	-	-	-	-	-	-	-	-	RNP-1
003	TF	NG302	-	095°	-	20.8	-	-	-	-	RNP-1
004	TF	NG303	-	097°	-	24.0	-	+11500	-	-	RNP-1
005	TF	THARA	-	083°	-	18.9	-	-	-	-	RNP-1

11. Coding Table: SID PUBOB 1A RWY08

<i>Serial No.</i>	<i>Path Descriptor</i>	<i>Waypoint Identifier</i>	<i>Flyover</i>	<i>Course/Track (*M)</i>	<i>Magnetic Variation</i>	<i>Distance (NM)</i>	<i>Turn Direction</i>	<i>Altitude (ft)</i>	<i>Speed (kts)</i>	<i>VPA/TCH</i>	<i>Navigation Specification</i>
001	CA	-	-	080°	-	-	R	@1000	-	-	RNP-1
002	DF	NG301	-	-	-	-	-	-	-	-	RNP-1
003	TF	NG302	-	095°	-	20.8	-	-	-	-	RNP-1
004	TF	NG303	-	097°	-	24.0	-	+11500	-	-	RNP-1
005	TF	PUBOB	-	054°	-	23.0	-	+12000	-	-	RNP-1

12. Coding Table: SID THARA 1B RWY 26

<i>Serial No.</i>	<i>Path Descriptor</i>	<i>Waypoint Identifier</i>	<i>Flyover</i>	<i>Course (*M)</i>	<i>Magnetic Variation</i>	<i>Distance (NM)</i>	<i>Turn Direction</i>	<i>Altitude (ft)</i>	<i>Speed (kts)</i>	<i>VPA/TCH</i>	<i>Navigation Specification</i>
001	CA	-	-	260°	-	-	L	@1000	-	-	RNP-1
002	DF	NG301	-	-	-	-	-	-	-	-	RNP-1
003	TF	NG302		095°	-	20.8	-	-	-	-	RNP-1
004	TF	NG303		097°	-	24.0	-	-	-	-	RNP-1
005	TF	THARA	-	083°	-	18.9	-	+10500	-	-	RNP-1

13. Coding Table: SID PUBOB 1B RWY 26

<i>Serial No.</i>	<i>Path Descriptor</i>	<i>Waypoint Identifier</i>	<i>Flyover</i>	<i>Course/Track (*M/*T)</i>	<i>Magnetic Variation</i>	<i>Distance (NM)</i>	<i>Turn Direction</i>	<i>Altitude (ft)</i>	<i>Speed (kts)</i>	<i>VPA/TCH</i>	<i>Navigation Specification</i>
001	CA	-	-	260°	-	-	L	@1000	-	-	RNP-1
002	DF	NG301	-	-	-	-	-	-	-	-	RNP-1
003	TF	NG302		095°	-	20.8	-	-	-	-	RNP-1
004	TF	NG303		097°	-	24.0	-				RNP-1
005	TF	PUBOB	-	054°	-	23.0	-	+12000	-	-	RNP-1

14. Coding Table: SID THARA 1C RWY 26

<i>Serial No.</i>	<i>Path Descriptor</i>	<i>Waypoint Identifier</i>	<i>Flyover</i>	<i>Course (*M)</i>	<i>Magnetic Variation</i>	<i>Distance (NM)</i>	<i>Turn Direction</i>	<i>Altitude (ft)</i>	<i>Speed (kts)</i>	<i>VPA/TCH</i>	<i>Navigation Specification</i>
001	CA	-	-	260°	-	-	R	@2000	-	-	RNP-1
002	DF	NG304	-	-	-	-	-	+3300	200	-	RNP-1
003	TF	NG301		137°	-	10.1	-	+6500			RNP-1
003	TF	NG302		095°	-	20.8	-	-			RNP-1
004	TF	NG303		097°	-	24.0	-	+11500			RNP-1
005	TF	THARA	-	083°	-	18.9	-	-	-	-	RNP-1

15. Coding Table: SID PUBOB 1C RWY 26

<i>Serial No.</i>	<i>Path Descriptor</i>	<i>Waypoint Identifier</i>	<i>Flyover</i>	<i>Course/Track (*M/*T)</i>	<i>Magnetic Variation</i>	<i>Distance (NM)</i>	<i>Turn Direction</i>	<i>Altitude (ft)</i>	<i>Speed (kts)</i>	<i>VPA/TCH</i>	<i>Navigation Specification</i>
001	CA	-	-	080°	-	-	R	@2000	-	-	RNP-1
002	DF	NG304	-	-	-	-	-	+3300	200	-	RNP-1
003	TF	NG301		137°	-	10.1	-	+6500	-	-	RNP-1
003	TF	NG302		095°	-	20.8	-	-	-	-	RNP-1
004	TF	NG303		097°	-	24.0	-	+11550	-	-	RNP-1
005	TF	PUBOB	-	054°	-	23.0	-	+12000	-	-	RNP-1

16. Coding Table: SID IVSOM 1C RWY 08

<i>Serial No.</i>	<i>Path Descriptor</i>	<i>Waypoint Identifier</i>	<i>Flyover</i>	<i>Course/Track (*M/*T)</i>	<i>Magnetic Variation</i>	<i>Distance (NM)</i>	<i>Turn Direction</i>	<i>Altitude (ft)</i>	<i>Speed (kts)</i>	<i>VPA/TCH</i>	<i>Navigation Specification</i>
001	CA	-	-	080°	-	-	L	@1500	-	-	RNP-1
002	DF	IVSOM	-	-	-	-	-	+5500	-	-	RNP-1

17. Coding Table: SID IVSOM 1D RWY26 (TRANSIT TO THARA)

<i>Serial No.</i>	<i>Path Descriptor</i>	<i>Waypoint Identifier</i>	<i>Flyover</i>	<i>Course/Track (*M/*T)</i>	<i>Magnetic Variation</i>	<i>Distance (NM)</i>	<i>Turn Direction</i>	<i>Altitude (ft)</i>	<i>Speed (kts)</i>	<i>VPA/TCH</i>	<i>Navigation Specification</i>
001	CA	-	-	260°	-	-	R	@2000	-	-	RNP-1
002	DF	IVSOM	-	-	-	-	-	+5500	180	-	RNP-1
003	TF	NG401		083°	-	15.2	-	+7000	-	-	RNP-1
004	TF	NG402		095°	-	20.6	-	+11500	-	-	RNP-1
005	TF	THARA	-	114°	-	43.0	-	-	-	-	RNP-1

18. Coding Table: SID IVSOM 1D RWY26 (TRANSIT TO PUBOB)

<i>Serial No.</i>	<i>Path Descriptor</i>	<i>Waypoint Identifier</i>	<i>Flyover</i>	<i>Course/Track (*M/*T)</i>	<i>Magnetic Variation</i>	<i>Distance (NM)</i>	<i>Turn Direction</i>	<i>Altitude (ft)</i>	<i>Speed (kts)</i>	<i>VPA/TCH</i>	<i>Navigation Specification</i>
001	CA	-	-	260°	-	-	R	@2000	-	-	RNP-1
002	DF	IVSOM	-	-	-	-	-	+5500	180	-	RNP-1
003	TF	NG401		083°	-	15.2	-	+7000	-	-	RNP-1
004	TF	NG402		095°	-	20.6	-	+11500	-	-	RNP-1
005	TF	PUBOB	-	099°	-	39.7	-	+12000	-	-	RNP-1

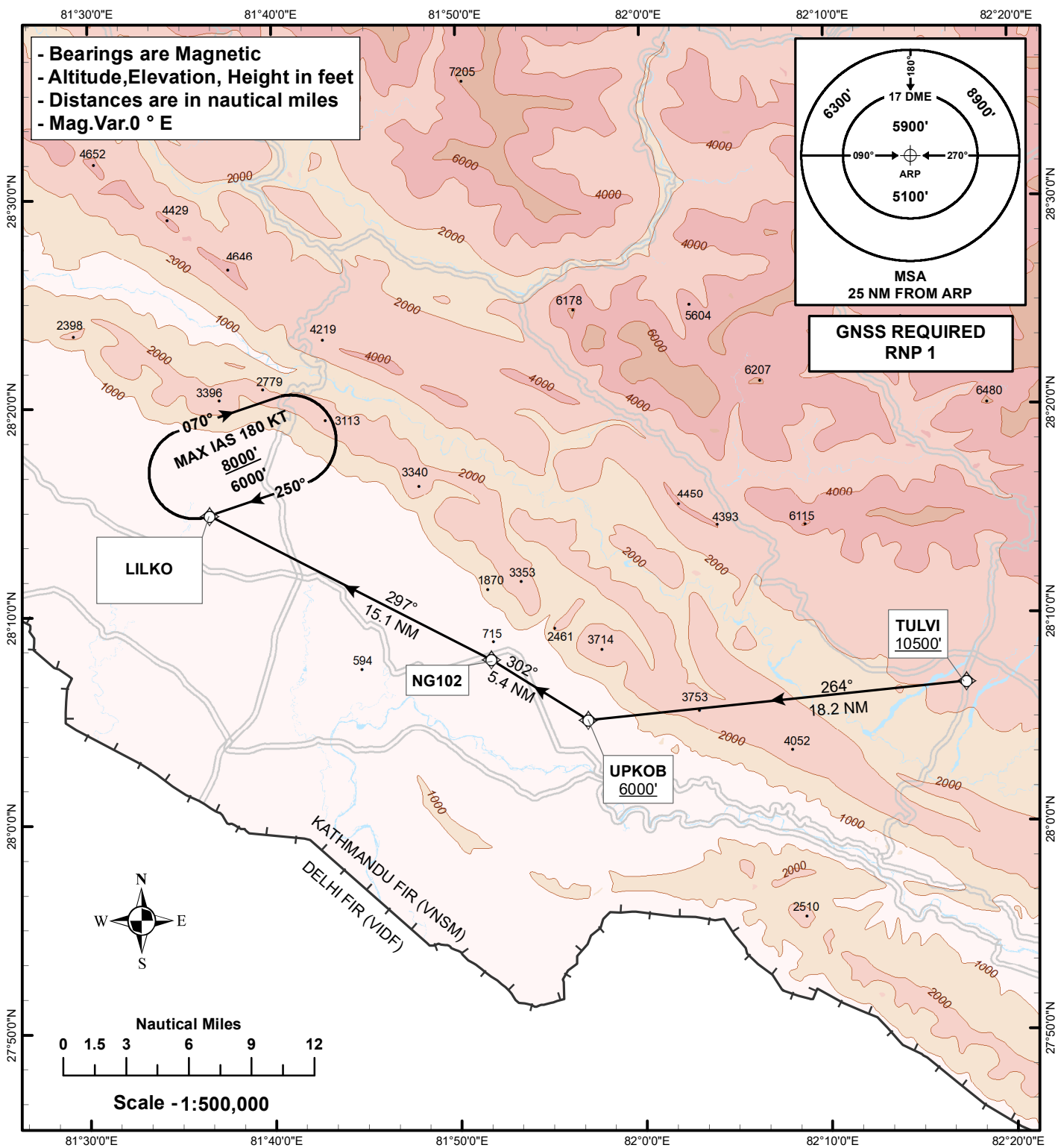
19. Coding Table: SID ENVAD 1D RWY 08

<i>Serial No.</i>	<i>Path Descriptor</i>	<i>Waypoint Identifier</i>	<i>Flyover</i>	<i>Course/Track (*M)</i>	<i>Magnetic Variation</i>	<i>Distance (NM)</i>	<i>Turn Direction</i>	<i>Altitude (ft)</i>	<i>Speed (kts)</i>	<i>VPA/TCH</i>	<i>Navigation Specification</i>
001	CA	-	-	080°	-	-	R	@1000	-	-	RNP-1
002	DF	ENVAD	-	-	-	-	-	+5500	-	-	RNP-1

20. Coding Table: SID ENVAD 1E RWY 26

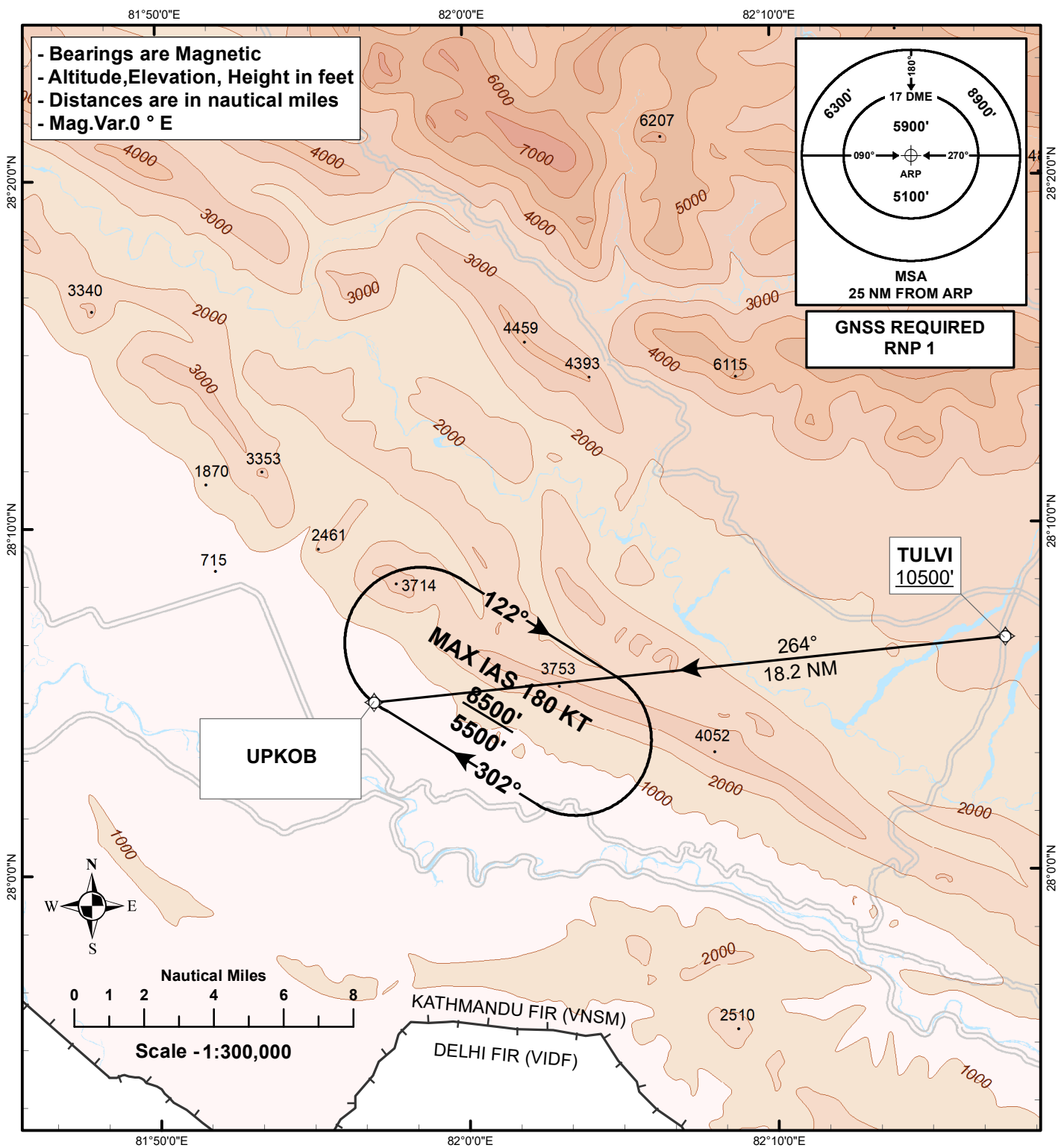
<i>Serial No.</i>	<i>Path Descriptor</i>	<i>Waypoint Identifier</i>	<i>Flyover</i>	<i>Course/Track (*M)</i>	<i>Magnetic Variation</i>	<i>Distance (NM)</i>	<i>Turn Direction</i>	<i>Altitude (ft)</i>	<i>Speed (kts)</i>	<i>VPA/TCH</i>	<i>Navigation Specification</i>
001	CA	-	-	260°	-	-	R	@1500	-	-	RNP-1
002	DF	NG501		-	-	-	-	+4000	-	-	RNP-1
003	TF	ENVAD	-	092° (093°)	-	14.7	-	+5500	-	-	RNP-1

<p>STANDARD ARRIVAL CHART- INSTRUMENT (STAR)-ICAO</p>	<p>AERODROME ELEV 518' TRANS LEVEL :FL 150 TRANS ALT : 13,500 FT</p>	<p>TWR 118.3 MHz</p>	<p>NEPALGUNJ, NEPAL (VNNG) NEPALGUNJ AIRPORT RWY 08 TULVI 1A</p>
--	---	-----------------------------	---



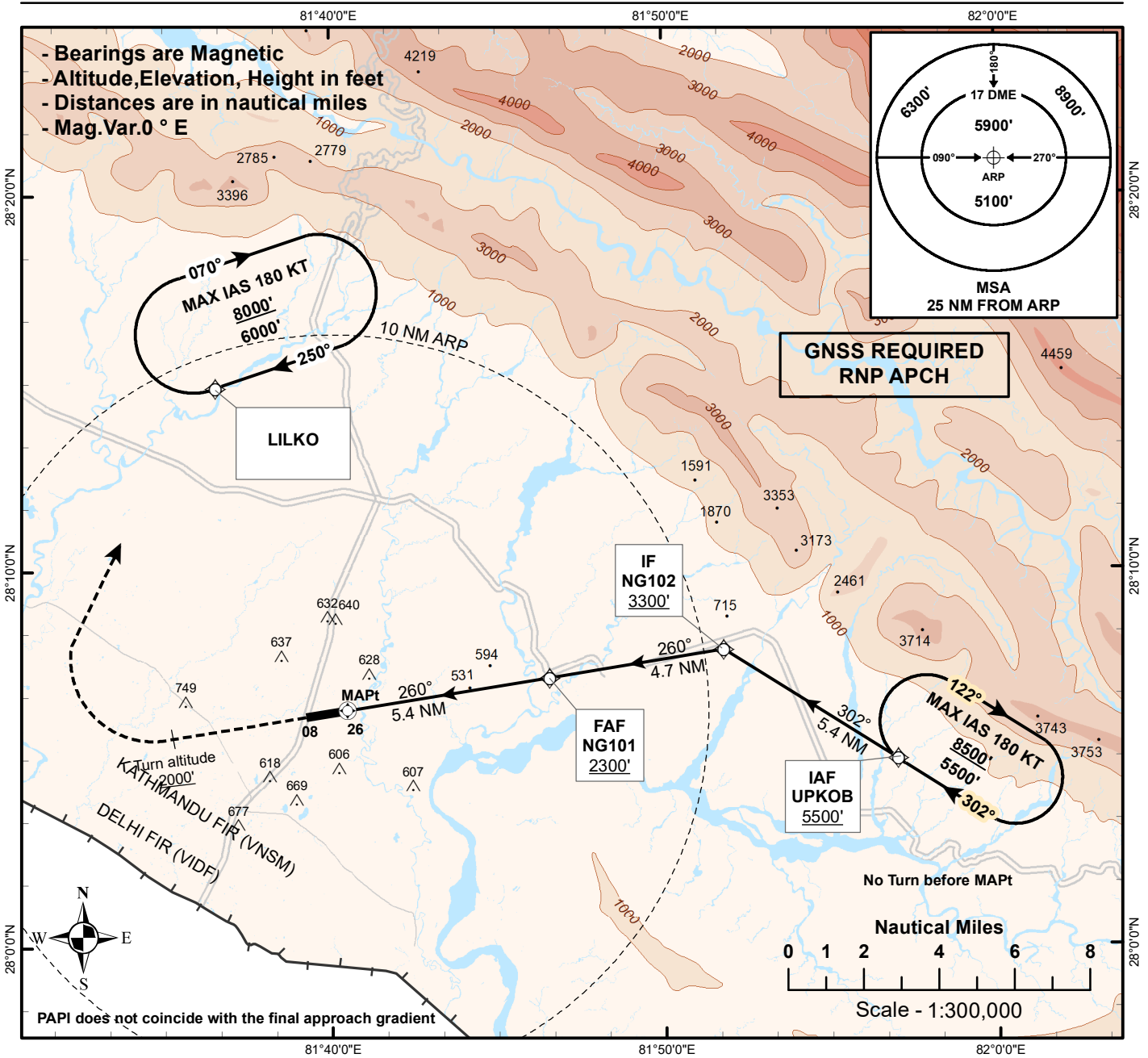
STAR	ROUTES
TULVI 1A	From TULVI to UPKOB at or above 6000 ft then to NG102 then to LILKO at or above 6000 ft.

STANDARD ARRIVAL CHART- INSTRUMENT (STAR)-ICAO	AERODROME ELEV 518' TRANS LEVEL :FL 150 TRANS ALT : 13,500 FT	TWR 118.3 MHz	NEPALGUNJ, NEPAL (VNNG) NEPALGUNJ AIRPORT RWY 26 TULVI 1B
--	---	---------------	--



STAR	ROUTES
TULVI 1B	From TULVI to UPKOB at or above 5500 ft.

INSTRUMENT APPROCH CHART-ICAO	AERODROME ELEV 518' HEIGHT RELATED TO THR RWY-ELEV 515'	TWR 118.3 MHz	NEPALGUNJ, NEPAL (VNNG) NEPALGUNJ AIRPORT RNP RWY 26 (LNAV/VNAV, LNAV Only)
		LNAV/VNAV Temp Range 0° to 61° C	



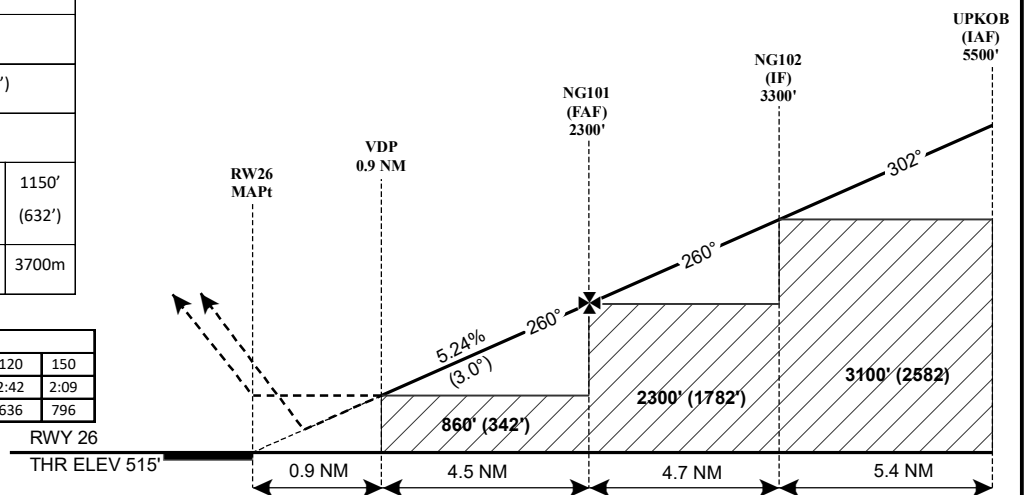
Category		CAT A	CAT B	CAT C
LNAV/VNAV	DA/DH	770' (252')		
	VIS*	1100m		
LNAV	MDA/MDH	860' (342')		
	VIS*	1400m		
CIRCLING	OCH	940' (422')	1070' (552')	1150' (632')
	VIS*	2000m	2800m	3700m

* FOR ALS OUT, increase VIS by 400m

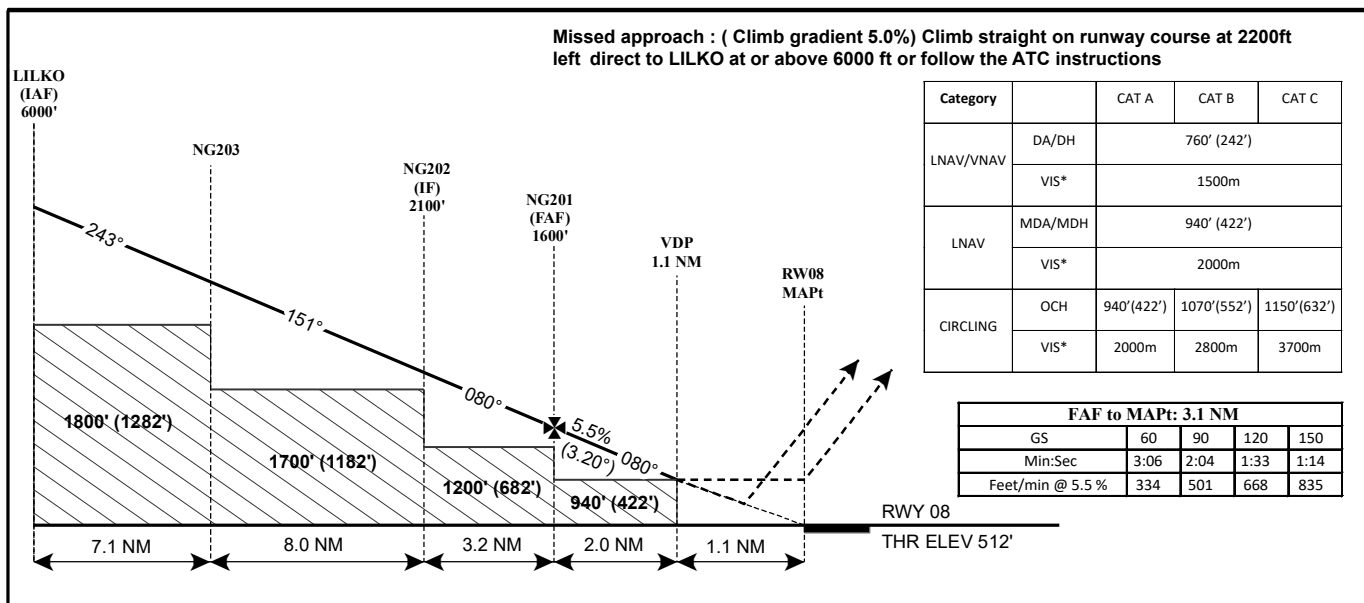
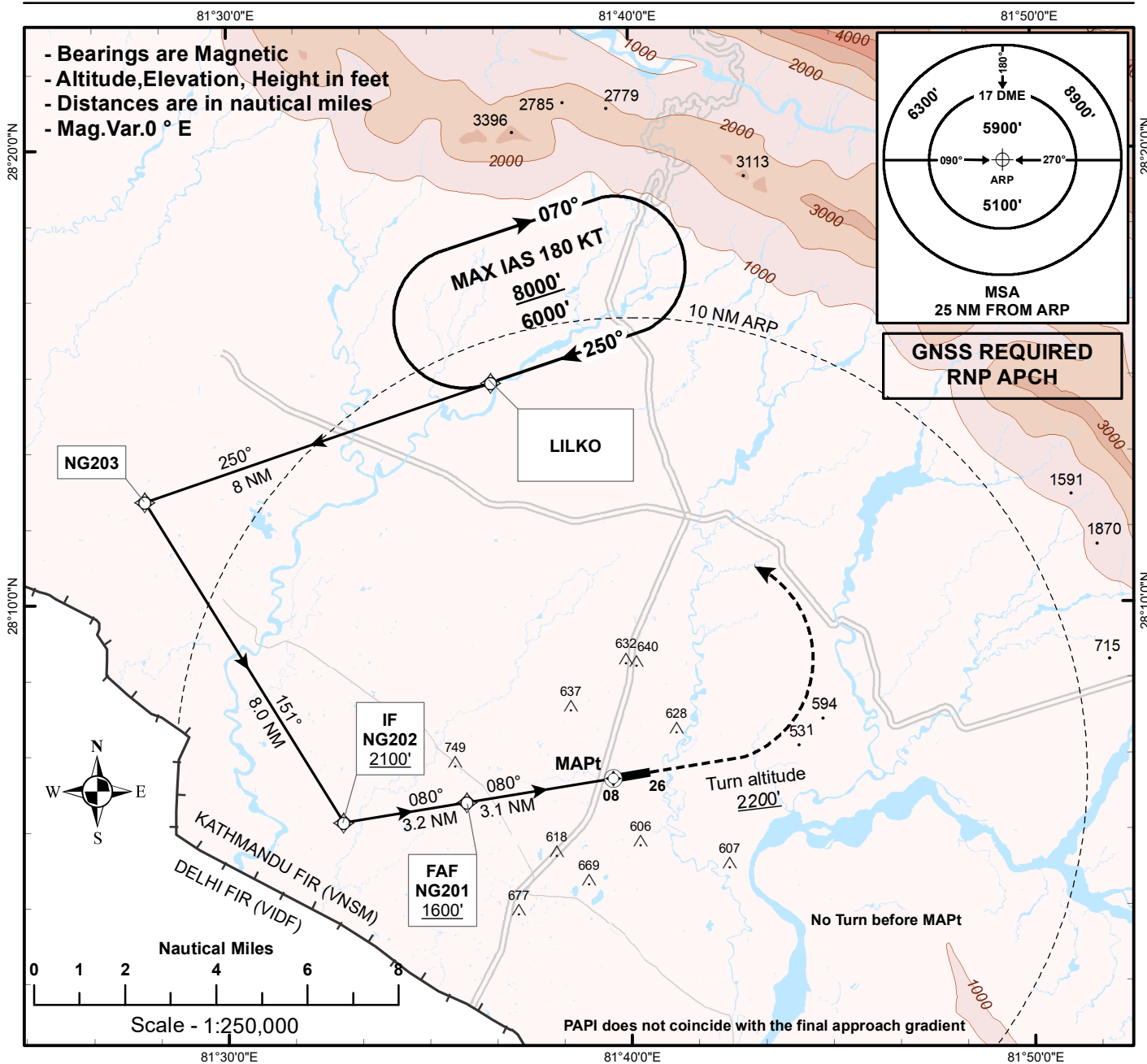
FAF to MAPt: 5.4 NM				
GS	60	90	120	150
Min:Sec	5:24	3:36	2:42	2:09
Feet/min @ 5.24 %	318	477	636	796

MISSED APPROACH : (Climb Gradient 5%)

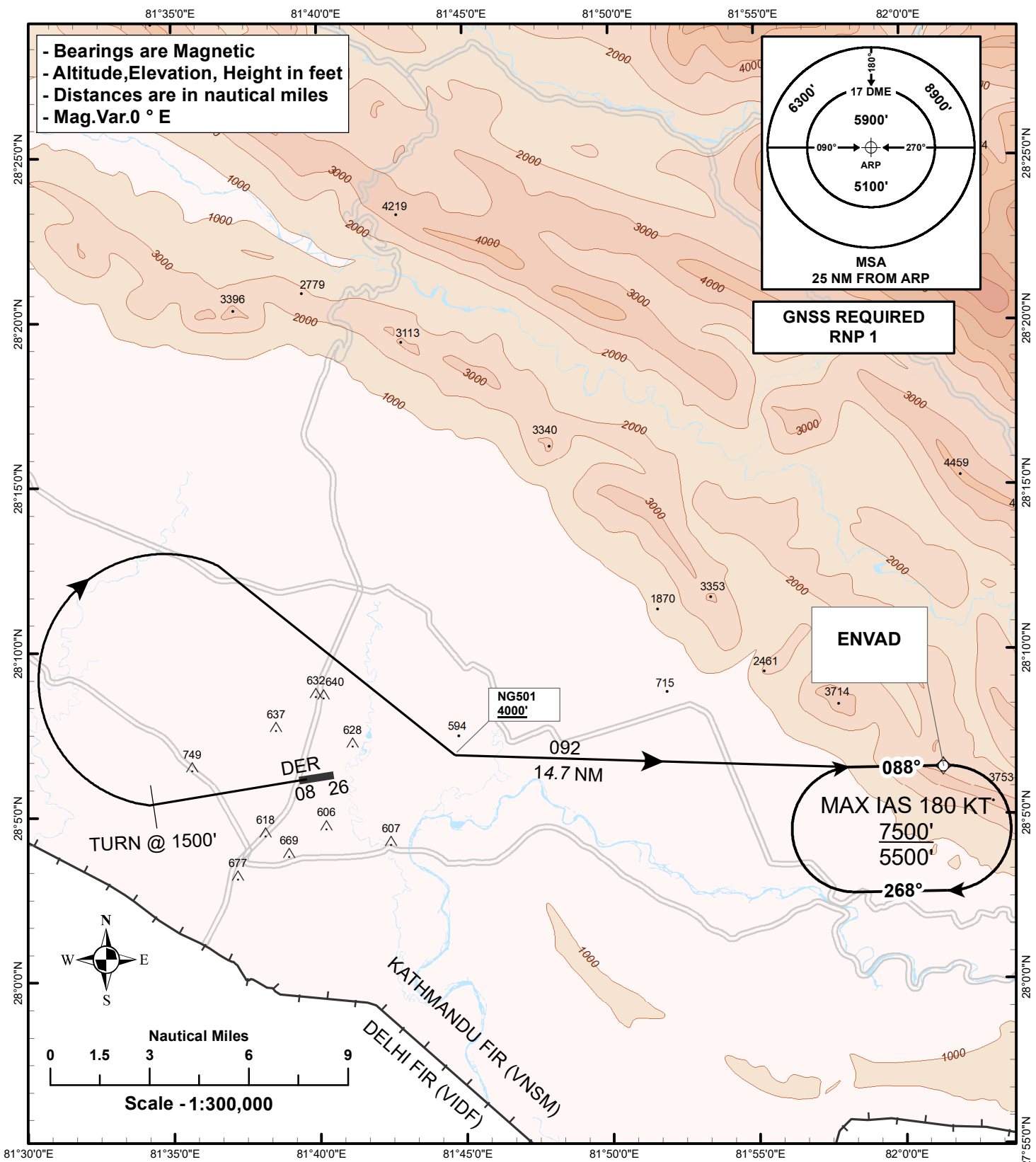
Climb straight on runway course at 2000 ft turn right direct to LILKO at or above 6000ft or follow the ATC instructions.



INSTRUMENT APPROCH CHART- ICAO	AERODROME ELEV 518' HEIGHT RELATED TO THR RWY-ELEV 512'	TWR 118.3 MHz	NEPALGUNJ, NEPAL (VNNG) NEPALGUNJ AIRPORT RNP RWY 08 (LNAV/VNAV, LNAV Only)
		LNAV/VNAV Temp Range 0° to 61° C	

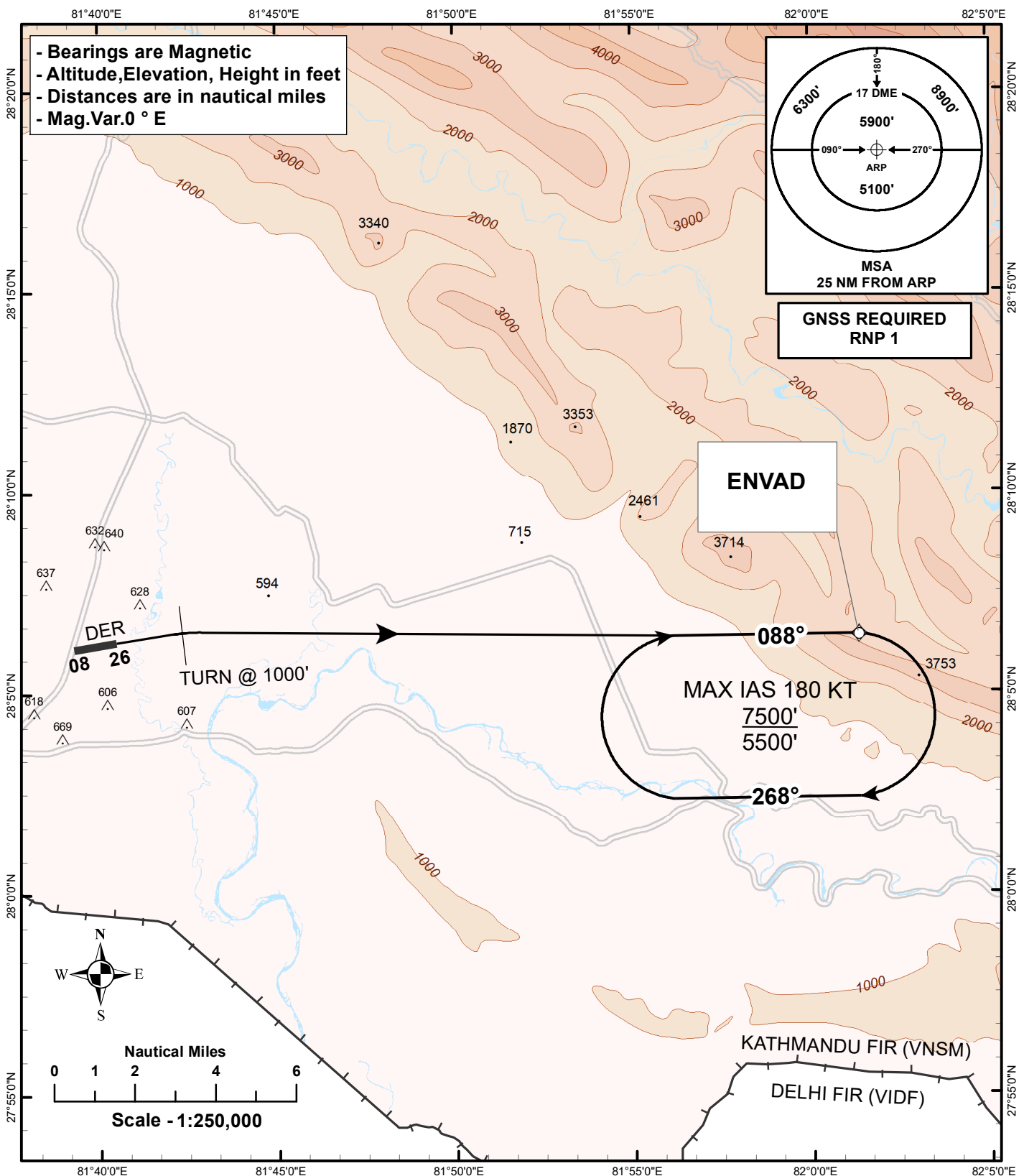


<p>STANDARD DEPARTURE CHART-INSTRUMENT(SID)-ICAO</p>	<p>AERODROME ELEV 518' TRANS LEVEL :FL 150 TRANS ALT : 13,500 FT</p>	<p>TWR 118.3 MHz</p>	<p>NEPALGUNJ, NEPAL (VNNG) NEPALGUNJ AIRPORT RWY 26 ENVAD 1E</p>
---	---	-----------------------------	--



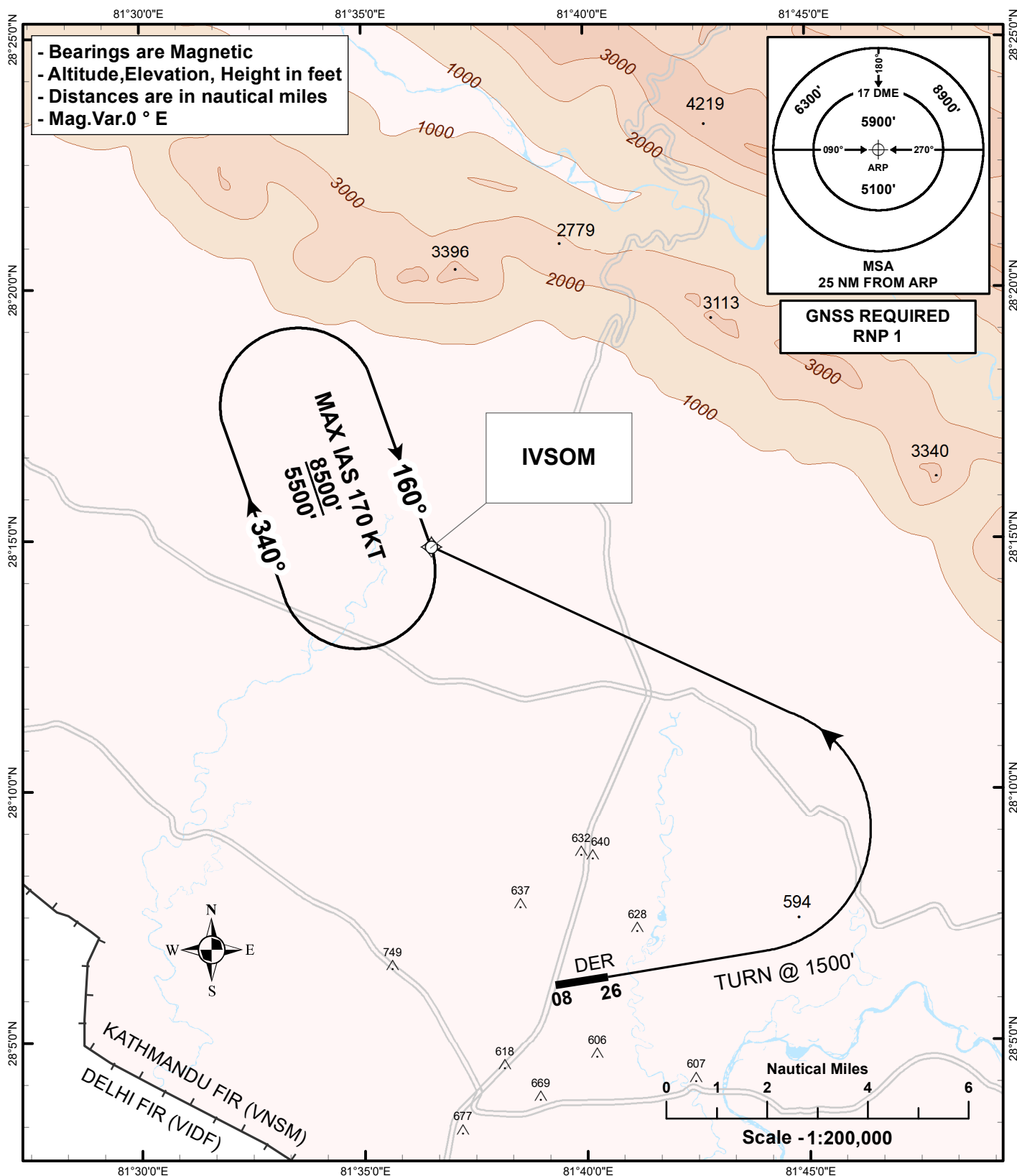
SID NAME	ROUTE
<p>ENVAD 1E (Climb Gradient @ 5% upto 1000' then 3.3%)</p>	<p>Climb straight on runway course at 1500 ft turn right direct to NG501 then to ENVAD at or above 5500 ft.</p>

<p>STANDARD DEPARTURE CHART-INSTRUMENT(SID)-ICAO</p>	<p>AERODROME ELEV 518' TRANS LEVEL :FL 150 TRANS ALT : 13,500 FT</p>	<p>TWR 118.3 MHz</p>	<p>NEPALGUNJ, NEPAL (VNNG) NEPALGUNJ AIRPORT RWY 08 ENVAID 1D</p>
---	---	-----------------------------	---



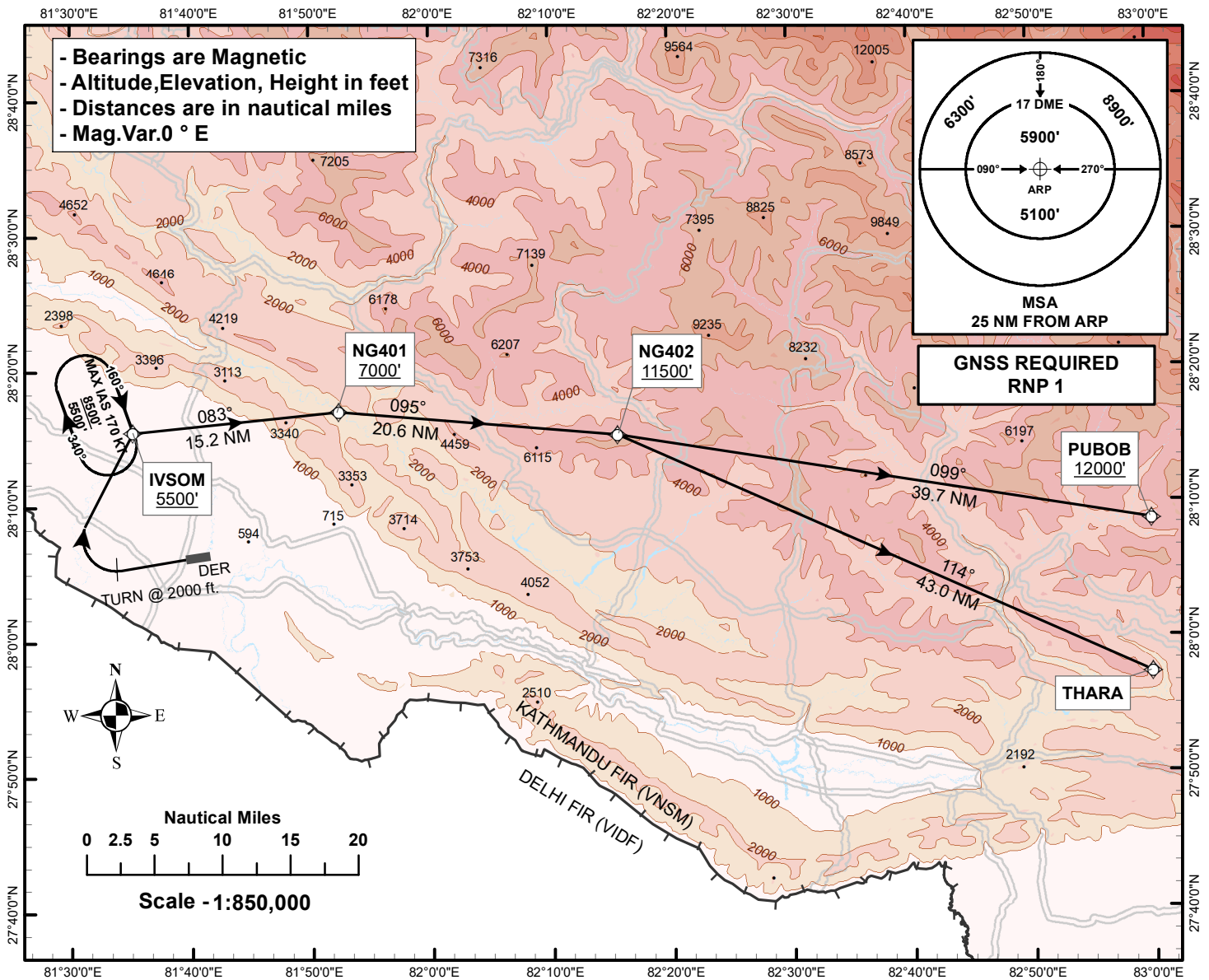
SID NAME	ROUTE
<p>ENVAID 1D (Climb Gradient @ 5.4%)</p>	<p>Climb straight on runway course at 1000 ft turn right direct to ENVAID at or above 5500 ft.</p>

<p>STANDARD DEPARTURE CHART-INSTRUMENT(SID)-ICAO</p>	<p>AERODROME ELEV 518' TRANS LEVEL :FL 150 TRANS ALT : 13,500 FT</p>	<p>TWR 118.3 MHz</p>	<p>NEPALGUNJ, NEPAL (VNNG) NEPALGUNJ AIRPORT RWY 08 IVSOM 1C</p>
---	---	-----------------------------	--



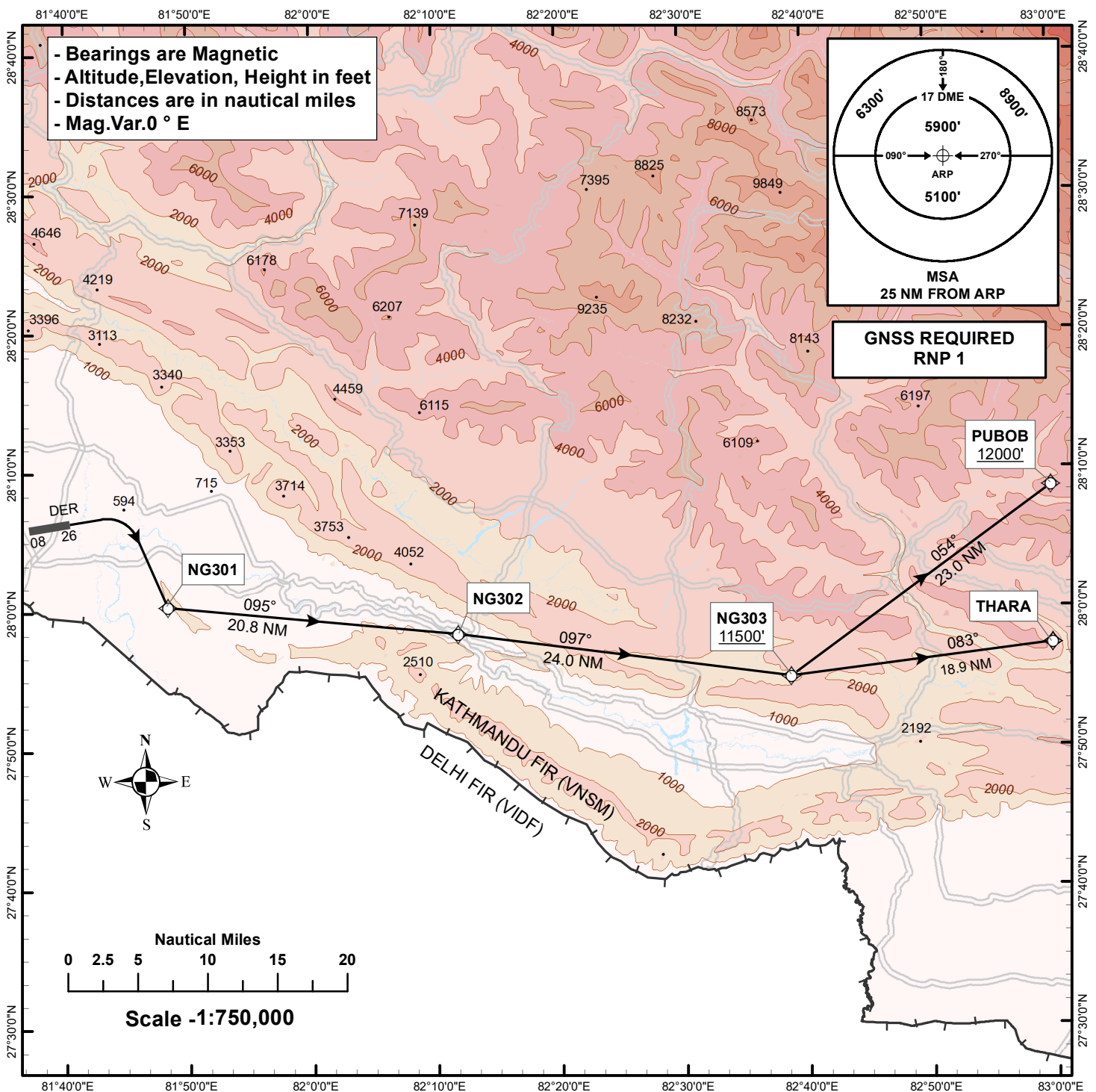
SID NAME	ROUTE
<p>IVSOM 1C (Climb Gradient @ 5.0% upto 3000' then 3.3%)</p>	<p>Climb straight on runway course at 1500 ft turn left direct to IVSOM at or above 5500 ft.</p>

STANDARD DEPARTURE CHART- INSTRUMENT (SID)- ICAO	AERODROME ELEV 518' TRANS LEVEL :FL 150 TRANS ALT : 13,500 FT	TWR 118.3 MHz	NEPALGUNJ, NEPAL (VNNG) FAJ AI RWY26 IVSOM 1D
---	--	----------------------	--



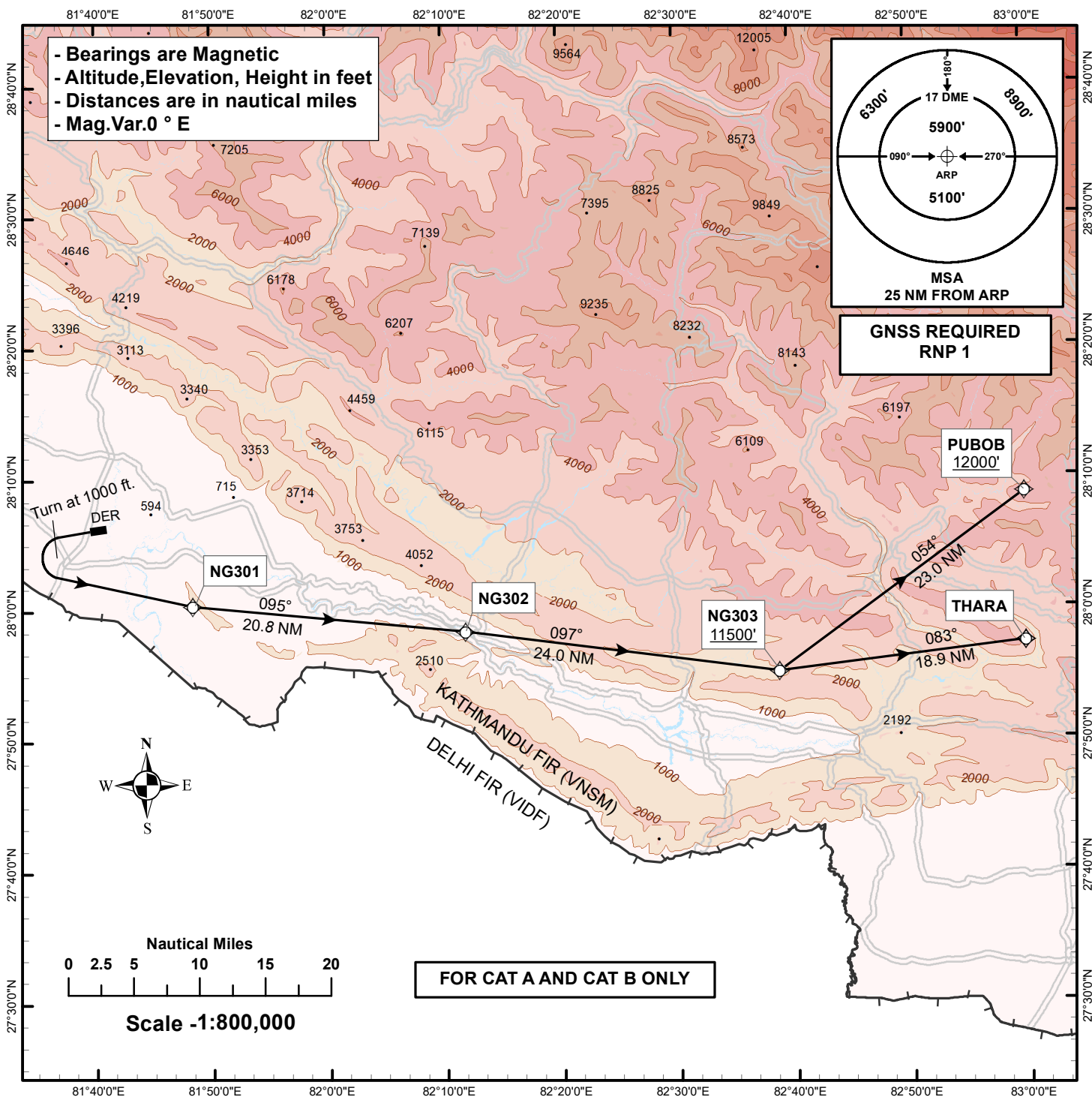
SID NAME	ROUTE
IVSOM 1D Climb Gradient @ 5% upto 5000' then 3.3%	Climb on runway heading then turn right at 2000 ft then proceed direct to IVSOM at or above 5500ft
Transit to Join Route W41 and W17	
Transit to join W41 at PUBOB.	From IVSOM track to NG401 at or above 7000 ft then NG402 at or above 11500 ft then to PUBOB at or above 12000ft to join W41.
Transit to Join W17 at THARA.	From IVSOM track to NG401 at or above 7000 ft then NG402 at or above 11500 ft then to THARA to join W17.

STANDARD DEPARTURE CHART- INSTRUMENT (SID)- ICAO	AERODROME ELEV 518' TRANS LEVEL :FL 150 TRANS ALT : 13,500 FT	TWR 118.3 MHz	NEPALGUNJ, NEPAL (VNNG) NEPALGUNJ AIRPORT RWY 08 THARA 1A/PUBOB 1A
---	---	---------------	---



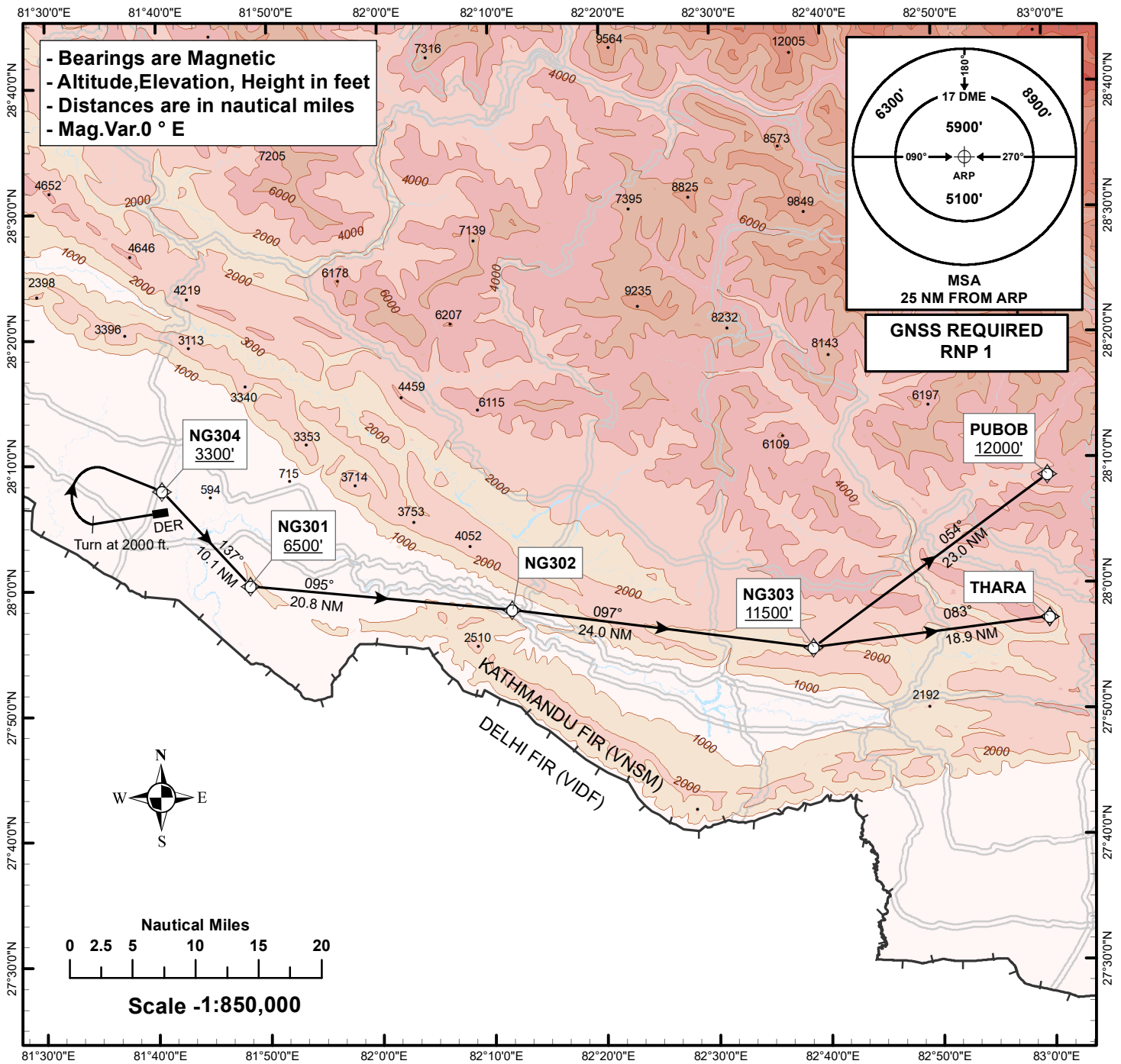
SID NAME	Route
THARA 1A (Climb Gradient @ 3.3%)	Climb straight on runway course at 1000 ft turn right direct to NG301 then to NG302 then to NG303 at or above 11500 ft then to THARA to join W17.
PUBOB 1A (Climb Gradient @ 3.3%)	Climb straight on runway course at 1000 ft turn right direct to NG301 then to NG302 then to NG303 at or above 11500 ft then to PUBOB at or above 12000 ft to join W41.

<p>STANDARD DEPARTURE CHART-INSTRUMENT (SID)-ICAO</p>	<p>AERODROME ELEV 518' TRANS LEVEL :FL 150 TRANS ALT : 13,500 FT</p>	<p>TWR 118.3 MHz</p>	<p>NEPALGUNJ, NEPAL (VNNG) NEPALGUNJ AIRPORT RWY 26 THARA 1B/PUBOB 1B</p>
--	---	-----------------------------	---



SID NAME	Route
<p>THARA 1B (Climb Gradient @ 5% upto 1000' then 3.3%)</p>	<p>Climbing on runway course and left turn at 1000 ft AMSL. Then direct to NG301 then to NG302 then to NG303 at or above 11500 ft. then to THARA.</p>
<p>PUBOB 1B (Climb Gradient @ 5% upto 1000' then 3.3%)</p>	<p>Climbing on runway heading and left turn at 1000 ft AMSL. Then direct to NG301 then to NG302 then to NG303 at or above 11500 ft. then to PUBOB at or above 12000 ft.</p>

STANDARD DEPARTURE CHART- INSTRUMENT (SID)- ICAO	AERODROME ELEV 518' TRANS LEVEL :FL 150 TRANS ALT : 13,500 FT	TWR 118.3 MHz	NEPALGUNJ, NEPAL (VNNG) NEPALGUNJ AIRPORT RWY 26 THARA 1C/PUBOB 1C
---	---	---------------	---



SID NAME	Route
THARA 1C (Climb Gradient @ 5% upto 1000' then 3.3%)	Climbing on runway course and right turn at 2000 ft. Then direct to NG304 at or above 3300 ft then to NG301 at or above 6500ft then to NG302 then NG303 at or above 11500 ft then to THARA.
PUBOB 1C (Climb Gradient @ 5% upto 1000' then 3.3%)	Climbing on runway course and right turn at 2000 ft AMSL. Then direct to NG304 at or above 3300 ft then to NG301 at or above 6500ft then to NG302 then NG303 at or above 11500 ft then to PUBOB at or above 12000 ft.