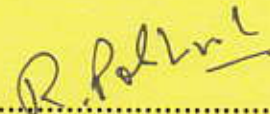


PHONE: 977-1 4262326 FAX : 977-1- 4262516 AFS : VNKTYOYX Email : cnsatm@mos.com.np caanais@caanepal.gov.np	<b>NEPAL</b> AERONAUTICAL INFORMATION SERVICE CIVIL AVIATION AUTHORITY OF NEPAL BABARMAHAL, KATHAMNDU	AIRAC AIP SUPPLEMENT S16/2019 18 JULY 2019
--	--	---

This AIRAC AIP supplement is issued for information, guidance and necessary action.



.....  
 DIRECTOR GENERAL  
 CIVIL AVIATION AUTHORITY OF NEPAL

(EFFECTIVE FROM 12 SEPTEMBER 2019)

## Correction Regarding Radial and Distance from SMR VOR to RATAN

Radial and Distance from SMR VOR to RATAN is corrected in the following charts.

S.N.	Charts	To be corrected as
1.	Standard Instrument Departure (SID) – ICAO of VNSI (AIRAC AIP Supplement S07/2019 Page 05 of 08)	RATAN R052 <sup>0</sup> /13.4 DME
2.	IFR Holding Points of VNSI (AIRAC AIP Supplement S07/2019 Page 04 of 08)	RATAN R052 <sup>0</sup> /13.4 DME
3.	Kathmandu Terminal Area Chart (VNKT AD 2-48, AIP Nepal 2018)	RATAN R052 <sup>0</sup> /13.4 DME
4.	Standard Terminal Arrival Route (Simara Arrival, Romeo Arrival) (VNKT AD 2-34, AIP Nepal 2018)	RATAN R052 <sup>0</sup> /13.4 DME
5.	En-route Chart (ENR 6.1-1 AIP Nepal, 2018)	RATAN R052 <sup>0</sup> /13.4 DME
6.	Aeronautical Chart (Scale : 1:500,000 )	RATAN R052 <sup>0</sup> /13.4 DME

**Note:**

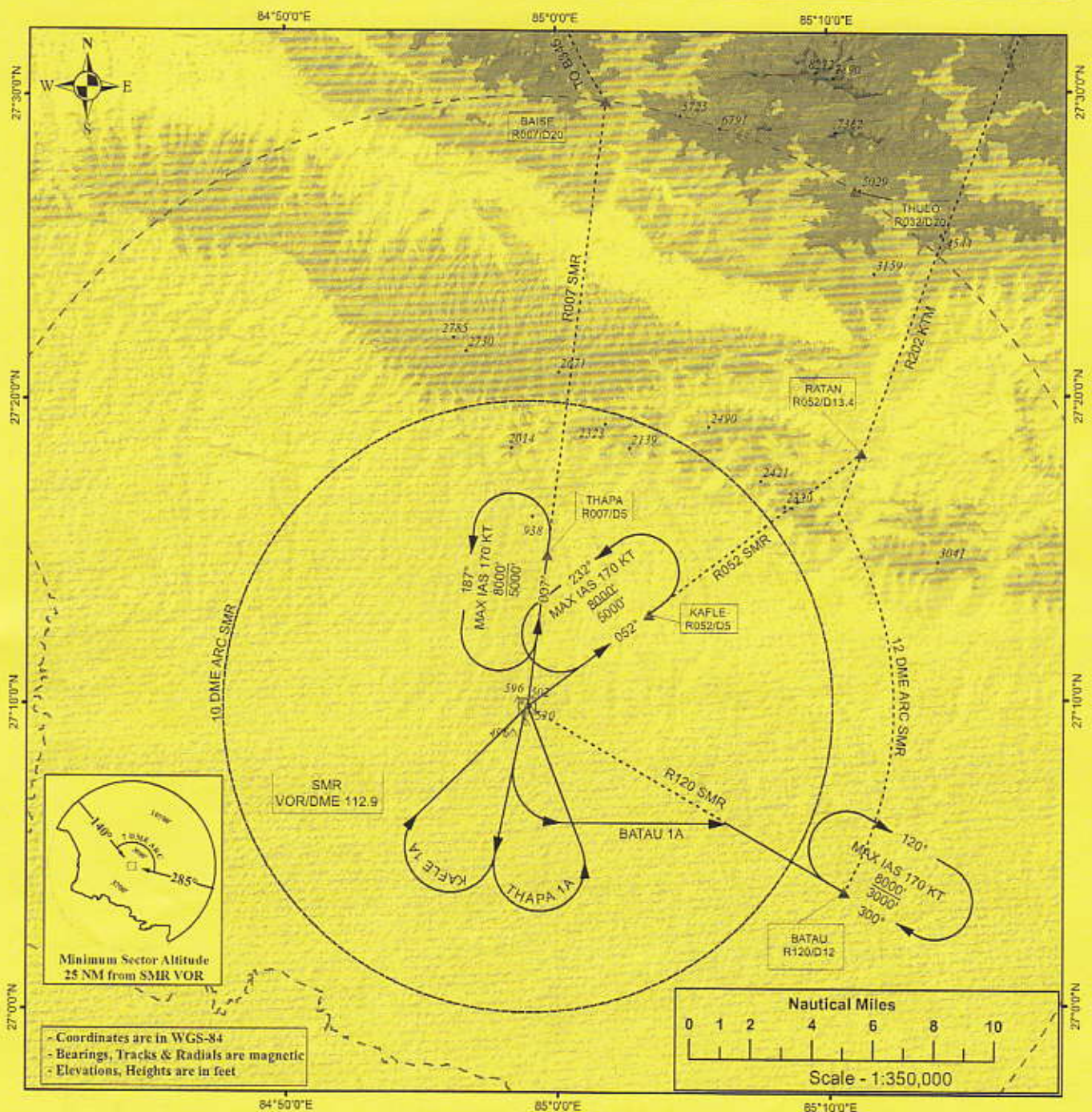
- This AIRAC AIP Supplement will be valid until superseded by another AIP Supplement or incorporated in AIP Amendment.
- Corrected En-route Chart (ENR 6.1-1) will be available in forth coming AIP Amendment.
- Corrected Aeronautical Chart (Scale : 1: 500,000) will be available in next Edition.  
(Ref page : ENR 6.1-1, VNKT AD & VNSI AD AIP Nepal)

STANDARD  
INSTRUMENT  
DEPARTURE  
(SID) - ICAO

AERODROME ELEVATION 447'  
TRANS LEVEL FL150  
TRANS ALT 13500  
VAR 0°E (2012)

TWR 118.3

SIMARA, NEPAL  
Simara Airport  
KAFLE 1A, THAPA 1A, BATAU 1A  
VOR 'SMR' 112.9



SID	RWY	ROUTING	TRANSITION
KAFLE 1A PDG (5.4%)	19	Departure turn limited to 180 KT IAS. Climb straight ahead. At 5 DME, turn RIGHT to SMR VOR at or above 5000 ft. Then follow SMR outbound R052 to KAFLE H.P.	Reach 8000 ft over KAFLE and follow outbound R052 SMR to RATAN at or above 11500 ft.
THAPA 1A PDG (5.1%)	19	Departure turn limited to 180 KT IAS. Climb straight ahead. At 5 DME, turn LEFT to SMR VOR at or above 5000 ft. Then follow SMR outbound R007 to THAPA H.P.	Reach 6000 ft over THAPA and follow outbound R007 SMR to BAISE at or above 10500 ft. Then join B345 via 20 DME arc KTM.
BATAU 1A PDG (4.9%)	19	Departure turn limited to 150 KT IAS. Climb straight ahead. At 1000 ft, turn LEFT and intercept outbound R120 SMR VOR to BATAU H.P. at or above 3000 ft.	Reach 8000 ft over BATAU and follow 12 DME arc SMR VOR/DME and intercept R202 KTM by RATAN at or above 11500 ft.

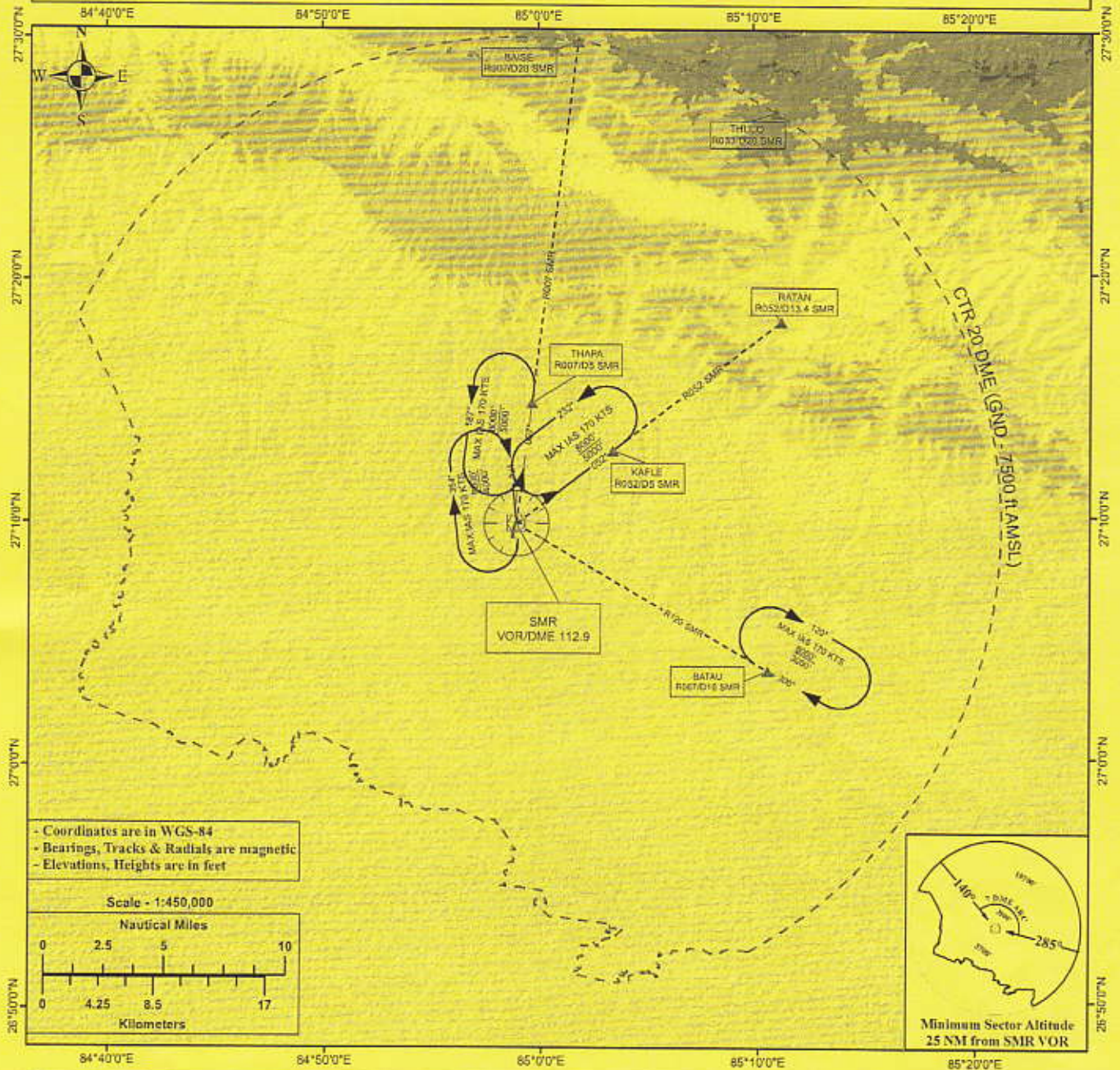
AERODROME ELEVATION 447'  
 TRANS LEVEL FL150  
 TRANS ALT 13500  
 VAR 0°E (2012)

TWR 118.3

SIMARA, NEPAL  
 Simara Airport

VOR 'SMR' 112.9

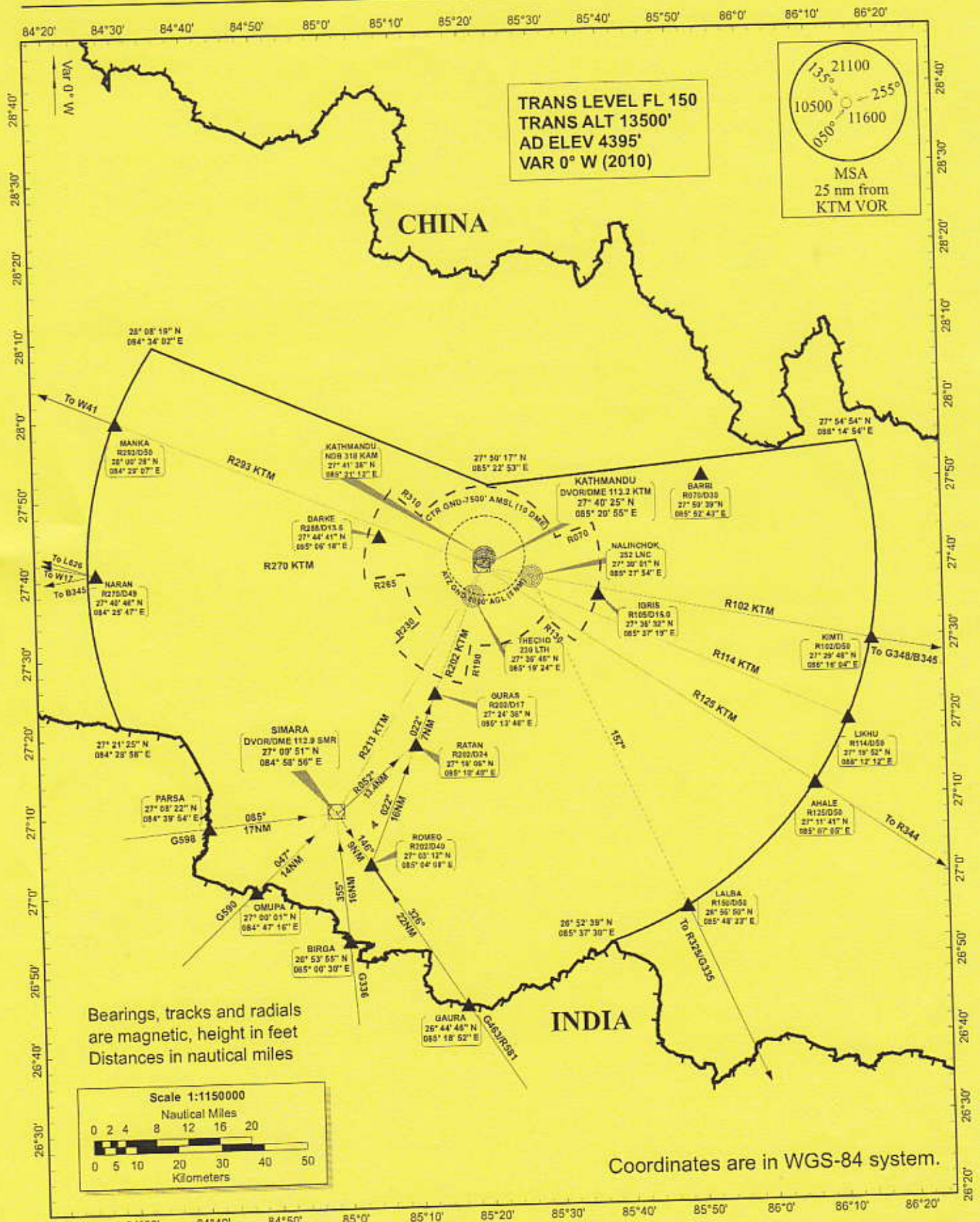
### IFR Holding Points



Holding	Location	Max. Altitude Min. Altitude	Max. IAS	Pattern	Inbound Track	Outbound Leg
SMR VOR	Over SMR VOR/DME	8000 ft AMSL 4000 ft AMSL	170 KTS	Right	174°	1 Minute
KAFLE	R052/D5 SMR VOR/DME	8000 ft AMSL 5000 ft AMSL	170 KTS	Left	052°	1 Minute
THAPA	R007/D5 SMR VOR/DME	8000 ft AMSL 5000 ft AMSL	170 KTS	Left	007°	1 Minute
BATAU	R120/D12 SMR VOR/DME	8000 ft AMSL 3000 ft AMSL	170 KTS	Right	300°	1 Minute

Note: BATAU holding is laterally separated with THAPA, KAFLE and SMR VOR holding.

# KATHMANDU TERMINAL AREA CHART



STANDARD TERMINAL ARRIVAL  
 ROUTE  
 SIMARA ARRIVAL  
 ROMEO ARRIVAL

AERODROME ELEV 4395'  
 TRANS LEVEL FL150  
 TRANS ALT 13500'  
 VAR 0° W (2010)

6673  
 APP 120.6 MHZ  
 TWR 118.1 MHZ  
 GND 121.9 MHZ

7014 7625 8940  
 KATHMANDU/NEPAL  
 Tribhuvan International Airport  
 STAR

STAR	ROUTING	ALTITUDE
SIMARA ARRIVAL	From 'SMR' proceed via R052 SMR to RATAN (R202/D24 'KTM') and intercept R202 'KTM' inbound to GURAS.	Cross 'SMR' at FL 150 or as instructed by ATC and 11500 ft over GURAS ( R202/D17 'KTM').
ROMEO ARRIVAL	From ROMEO turn right to intercept R202 KTM inbound to RATAN (R202/D24 'KTM') and proceed to GURAS.	Cross ROMEO at FL 150 or as instructed by ATC and 11500 ft over GURAS ( R202/D17 'KTM').

