

AD 2. AERODROME**VNVN AD 2.1 AERODROME LOCATION INDICATOR AND NAME****VNVN – BIRATNAGAR / Domestic****VNVN AD 2.2 AERODROME GEOGRAPHICAL AND
ADMINISTRATIVE DATA**

1.	ARP Coordinates and site at AD	262903N 0871552E*
2.	Direction and Distance from (city)	5. Km, North West
3.	Elevation/Reference Temperature	72m. /236ft., 40°C (June)
4.	MAG VAR/Annual Change	0 ° W
5.	AD Administration, address Telephone, Telefax, Telex AFS	Civil Aviation Authority of Nepal Biratnagar Airport , Morang. Tel- 977-021-461641, 461424 Fax - 977-021- 460155 AFS - VNVTYDYX
6.	Types of traffic permitted (IFR/VFR)	IFR / VFR
7.	Remarks	-

VNVN AD 2.3 OPERATIONAL HOURS

1.	AD Administration	SUN-THU 10:00 -17:00 LT (SUMMER), 10:00-1600 LT (WINTER), FRI 10:00-1500 LT
2.	Customs and immigration	NIL
3.	Health and sanitation	NIL
4.	AIS Briefing Office	AS ATS
5.	ATS Reporting Office (ARO)	AS ATS
6.	MET Briefing	Hourly METAR provided during Operation Hours
7.	ATS	Jan, Feb, Nov, Dec 0100-1215 UTC Mar., Apr., Sept, Oct. 0030-1245 UTC May, June, July, Aug 0015-1300 UTC **
8.	Fuelling	Jet A1 during Operation Hours
9.	Handling (Cargo)	NIL
10.	Security	H-24
11.	Remarks	Any change will be notified by NOTAM

* WGS -84 Coordinates

** For operations other than above, Prior Co-ordination is required

VNVT AD 2.4 HANDLING SERVICES AND FACILITIES

1.	Cargo-handling facilities	Available with local airlines operator
2.	Fuel/Oil Types	JET A-1 / Not available
3.	Fuelling facilities/capacity	During period of flight operation/ NA
4.	De-icing facilities	NIL
5.	Hanger space for visiting aircraft	NIL
6.	Repair facilities for visiting aircraft	NIL
7.	Remarks	-

VNVT AD 2.5 PASSENGER FACILITIES

1.	Hotels	in the city
2.	Restaurants	in the city
3.	Transportation	Taxi Service, Rickshaw from AD
4.	Medical Facilities	First Aid at AD, Hospitals in the city.
5.	Bank and Post Office	NIL
6.	Tourist Office	In the city.
7.	Remarks	-

VNVT AD 2.6 RESCUE AND FIRE FIGHTING SERVICE

1.	AD Category for firefighting	Category V
2.	Rescue equipment	Available as per category
3.	Capability for removal of disabled aircraft	NIL
4.	Remarks	-

VNVT AD 2.7 SEASONAL AVAILABILITY

Aerodrome is available throughout the year.

VNVT AD 2.8 APRONS, TAXIWAYS AND CHECK LOCATION DATA

1.	Apron surface and strength	Surface - Asphalt Concrete, Strength - ...
2.	Taxiway width, surface and strength	Width - 23 m, Surface – Bitumen, Strength - ...
3.	ACL location and elevation	Location: - At Apron Elevation:- 236 ft.
4.	VOR/INS checkpoints	VOR:- Taxi holding position.
5.	Remarks	APRON area 178.5 m × 62.5m

VNVT AD 2.9 SURFACE MOVEMENT GUIDANCE AND CONTROL SYSTEM AND MARKINGS

1.	Use of aircraft stand ID signs, TWY guide lines and visual docking/parking guidance system of aircraft stands	Taxiing guidance signs at intersections with TWY and RWY and at holding positions. Guide lines at apron.
2.	RWY and TWY markings and LGT	RWY: 09/27, THR, TDZ, Center line, RWY edge marked and RWY END, THR, RWY edge have lights. TWY: Center line, holding positions at all TWY/RWY intersections marked and edge with blue lights.
3.	Stop bars
4.	Remarks	-

VNVT AD 2.10 AERODROME OBSTACLES

In area 2					
OBST ID/ Designation	Obstacle type	Obst. position	ELEV/HGT (mt)	Markings/Type color	Remarks
a	b	c	d	e	f
VNVT0B001	Tel TWR Antenna	26 27 42N 87 17 10E	140/68	Marked/LGTD	
V NVT0B002	VOR/DME Antenna	26 28 58N 87 14 58E	87/15	Marked/LGTD	

VNVT AD 2.11 METEOROLOGICAL INFORMATION PROVIDED

1.	Associated MET Office	MET office, BIRATNAGAR AIRPORT
2.	Hours of service MET office outside hours	Available during Operation Hrs.
3.	Office responsible for TAF preparation periods of validity	NIL
4.	Type of landing forecast interval of issuance	NIL
5.	Briefing/Consultation provided	METAR
6.	Flight documentation language(s) used	Charts or Tabular forms Text English
7.	Charts and other information available for briefing or consultation	NIL
8.	Supplementary equipment available for providing information	Self- briefing terminal
9.	ATS units provided with information	Biratnagar TWR
10.	Additional information (limitation of service, etc.)	NIL

VNVT AD 2.12 RUNWAY PHYSICAL CHARACTERISTICS

Designation RWY NR	TRUE & MAG BRG	Dimensions of RWY (M)	Strength(PCN) and surface of RWY and SWY	THR Coordinates	THR elevation
1	2	3	4	5	6
09	092°	1500 x 30	Bitumen	262856.88N * 0871522.25E	74.84m AMSL
27	272°	1500 x30	Bitumen	262855.06N* 0871616.34E	74.96m AMSL
Slope of RWY- SWY	SWY Dimensions (M)	CWY Dimensions (M)	Strip Dimensions (M)	OFZ	Remarks
7	8	9	10	11	12
.....

VNVT AD 2.13 DECLARED DISTANCES

RWY Designator	TORA (m)	TODA (m)	ASDA (m)	LDA (m)	Remarks
1	2	3	4	5	6
09	1500	1500	1500	1500	
27	1500	1500	1500	1500	

VNVT AD 2.14 APPROACH AND RUNWAY LIGHTING

RWY Designator	APCH LGT type LEN INTST	THR LGT color WBA R	VASIS PAPI	LEN	RWY Center Line LGT Length, spacing color, INTST	RWY edge LGT LEN, spacing color INTST	RWY End LGT color	SWY LGT LEN (M) color	Remarks
1	2	3	4	5	6	7	8	9	10
09	SALS 420 M LIM	Green	PAPI Left/3.15°	NIL	NIL	1500m 60m White, LIM	Red	NIL	NIL
27	NIL	Green	PAPI Left/3.00°	NIL	NIL	1500m 60m White, LIM	Red	NIL	

* WGS 84 Coordinates

VNVN AD 2.15 OTHER LIGHTING, SECONDARY POWER SUPPLY

1.	ABN /IBN Location, characteristics and hours of operation	ABN: at Tower Building, G FLG ALTN with W EV 2 SEC/IBN: NIL H12
2.	LDI Location and LGT Anemometer Location and LGT	NIL
3.	TWY edge and Centre line lighting	Edge: All TWY Centre Line : NIL
4.	Secondary power supply / switch over time	Secondary power supply to all lighting at AD Switch over time: manually
5.	Remarks	NIL

VNVN AD 2.16 HELICOPTER LANDING AREA

Not specified

VNVN AD 2.17 ATS AIRSPACE

1. Designation and lateral limits	<u>Biratnagar CTR</u> : An area bounded by VNSM boundary to the south and an arc of a circle 20 NM in radius centered at 'BRT' VOR (262858N, 0871458E*) plus an area enclosed by R295 BRT – R345 BRT upto 30 NM <u>Biratnagar ATZ</u> : An area of a circle of radius 5 NM centered at 'ARP' and to the south bounded by VNSM boundary.	
2. Vertical Limits	CTR	ATZ
	<u>10500' MSL</u> GND	<u>2000' AGL</u> GND
3. Airspace classification	C	
4. ATS units call sign/languages(s)	Biratnagar TWR/English	
5. Transition Altitude	13500' AMSL	
6. Remarks	-	

VNVN AD 2.18 ATS COMMUNICATION FACILITIES

Service Designation	Call Sign	Frequency	Hours of Operation**	Remarks
1	2	3	4	5
TWR	Biratnagar Tower	123.8 MHZ	<i>Jan, Feb, Nov, Dec 0100-1215 UTC</i> <i>Mar., Apr., Sept., Oct. 0030-1245 UTC</i> <i>May, June, July, Aug 0015-1300 UTC</i>	

* WGS 84 Coordinates

VNVT AD 2.19 RADIO NAVIGATION AND LANDING AID

Type of Aid MAG VAR Type of supported OP (for VOR/ILS/MLS give declinations)	ID	Frequency	OPR Hours	Position of Transmitting Antenna Coordinates	Elevation of DME Transmitting Antenna	Remarks
1	2	3	4	5	6	7
DVOR/DME 0° W	BRT	114.1 MHZ CHN 88 X	H24	262858N* 0871458E	87 m	DVOR Range 100NM DME Range 100NM
NDB	VTN	358 KHZ	H24	262908N* 0871559 E		

VNVT AD 2.20 LOCAL TRAFFIC REGULATIONS

To be Developed

VNVT AD 2.21 NOISE ABATEMENT PROCEDURES

NIL

* WGS -84 Coordinates

VNVT AD 2.22 FLIGHT PROCEDURES

To be developed

VNVT AD 2.23 ADDITIONAL INFORMATION

1. Bird Activity

- a) Sometimes cases of bird concentrations in the vicinity of aerodrome may be encountered.
- b) 2. No Special procedures have been adopted to control these bird concentrations except driving them through guards and security personnel.

VNVT AD 2.24 CHARTS RELATED TO BIRATNAGAR AIRPORT

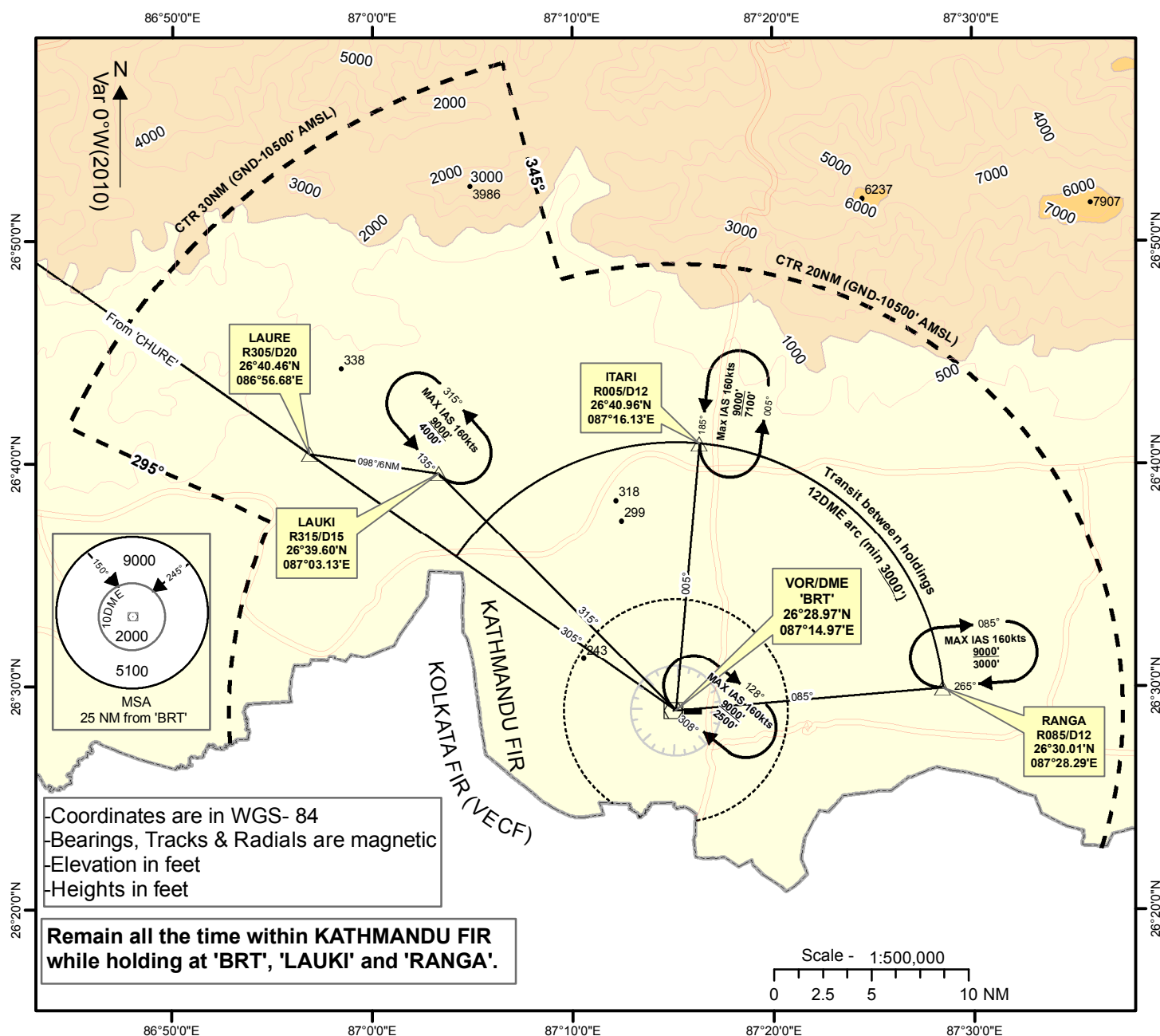
Control Zone and Holding Points		VNVT AD 2-10
Instrument Approach Chart – RWY 09/27	VNVT AD 2-11 -	VNVT AD 2-15
Standard Departure Chart – RWY 09/27	VNVT AD 2-16 -	VNVT AD 2-18
Standard Terminal Arrival Route		VNVT AD 2-19
RNAV GNSS approach procedure at Biratnagar Airport	VNVT AD 2-20 -	VNVT AD 2-21
Standard Terminal Arrival Chart		VNVT AD 2-22
Instrument Approach Chart		VNVT AD 2-23
Aerodrome Chart		VNVT AD 2-24

AERODROME ELEV 236'
TRANS LEVEL: FL150
TRANS ALT: 13500 ft.
Mag Var. 0°W (2010)

TWR 123.8

BIRATNAGAR, NEPAL
Biratnagar Airport
VOR 'BRT' 114.1
NDB 'VTN' 358

CONTROL ZONE AND IFR HOLDING POINTS



- 'LAUKI' and 'RANGA' holdings are laterally separated from each other
- 'LAUKI' and 'BRT' holdings are laterally separated from each other

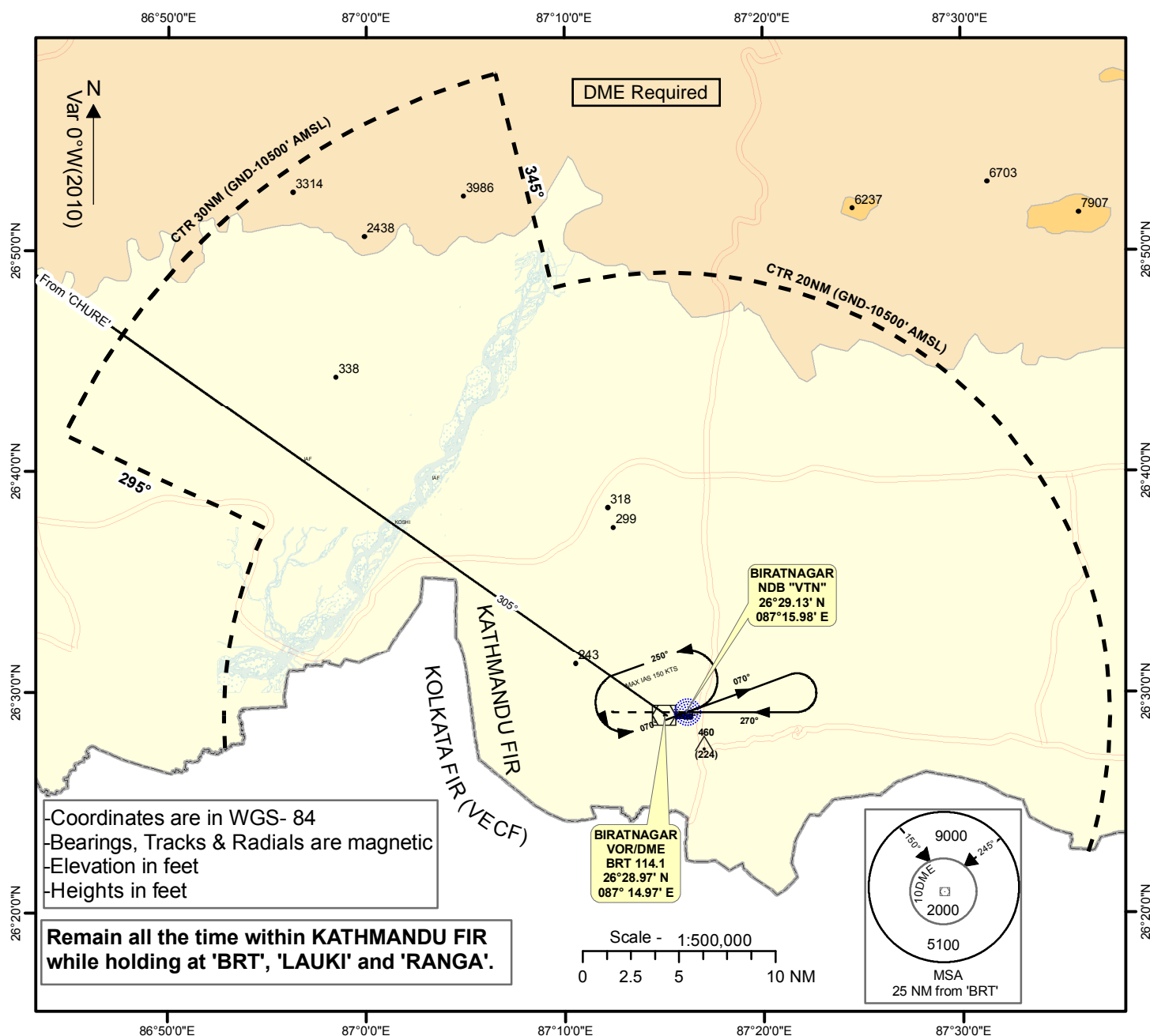
NAV FAC	FRQ	COORDINATE
DVOR/DME 'BRT'	114.1MHz/88X	26°28.97'N 087°14.97'E
NDB 'VTN'	358 KHz	

INSTRUMENT
APPROACH
CHART - ICAO

AD ELEV 236 ft.
TRANS LEVEL: FL 150
TRANS ALT: 13500 ft.
Mag. Var. 0°W (2010)

TWR 123.8

BIRATNAGAR, NEPAL
Biratagar Airport
NDB RWY 27
NDB 'VTN' 358

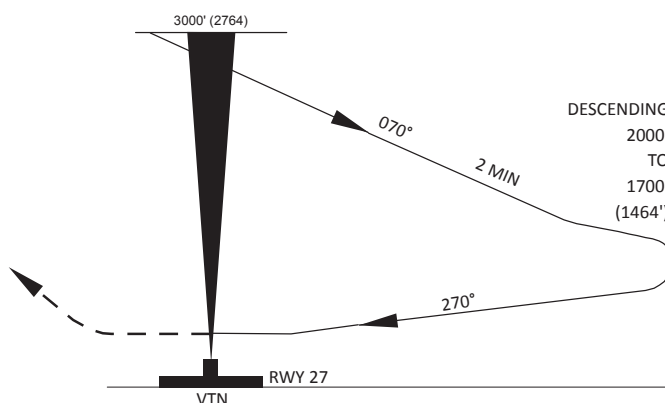


DESCEND IN HOLDING TO 3000' (2764):-

MISSED APPROACH

If not visual over VTN NDB climb st. ahead to 1500 ft make a left climbing turn to intercept and track on 070 bearing to VTN HP at or above 3000 ft or as instructed by ATC

AIRPORT OPERATING MINIMA	DAY			NIGHT		
	MDA	CEIL	VIS	MDA	CEIL	VIS
ST- IN LDG RWY 27	750 ft (514 ft)	600 ft	1500 m	750 ft (514 ft)	600 ft	2500 m
CIRCLE TO LAND	750 ft (514 ft)	600 ft	1500 m	NOT AUTHORIZED		

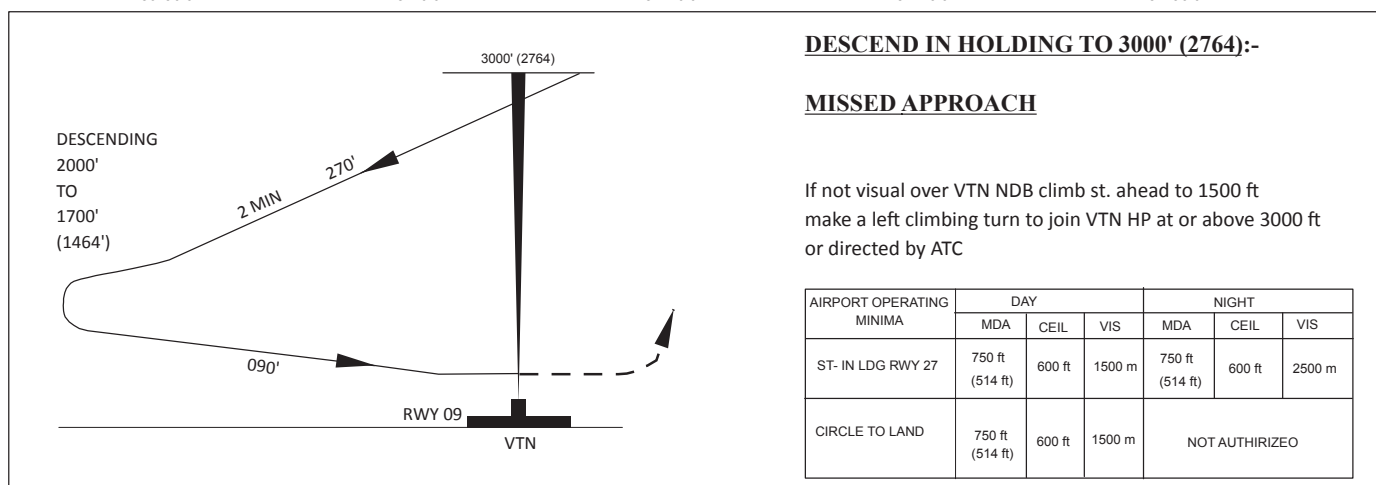
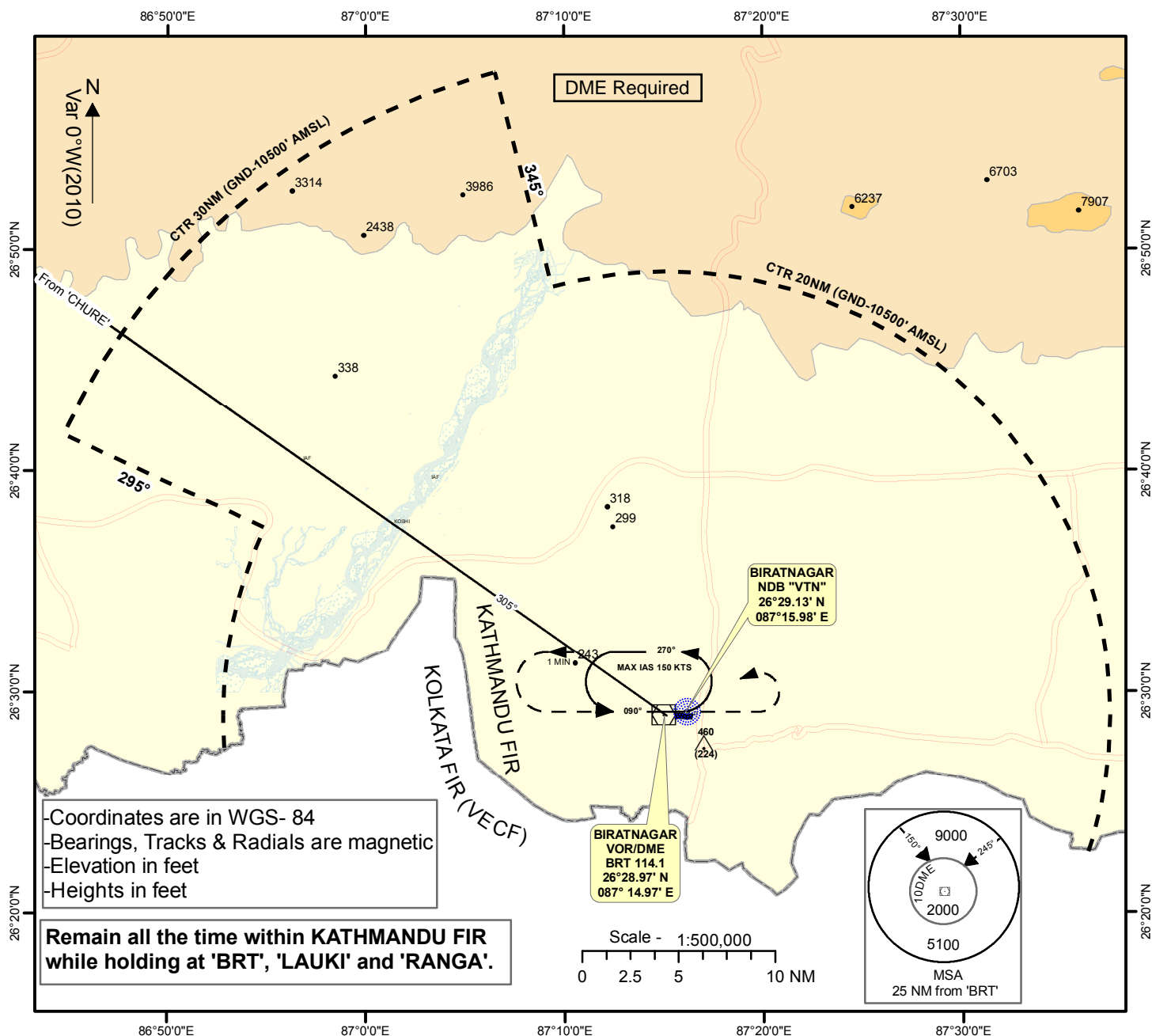


INSTRUMENT
APPROCH
CHART - ICAO

AD ELEV 236 ft.
TRANS LEVEL: FL 150
TRANS ALT: 13500 ft.
Mag. Var. 0° W (2010)

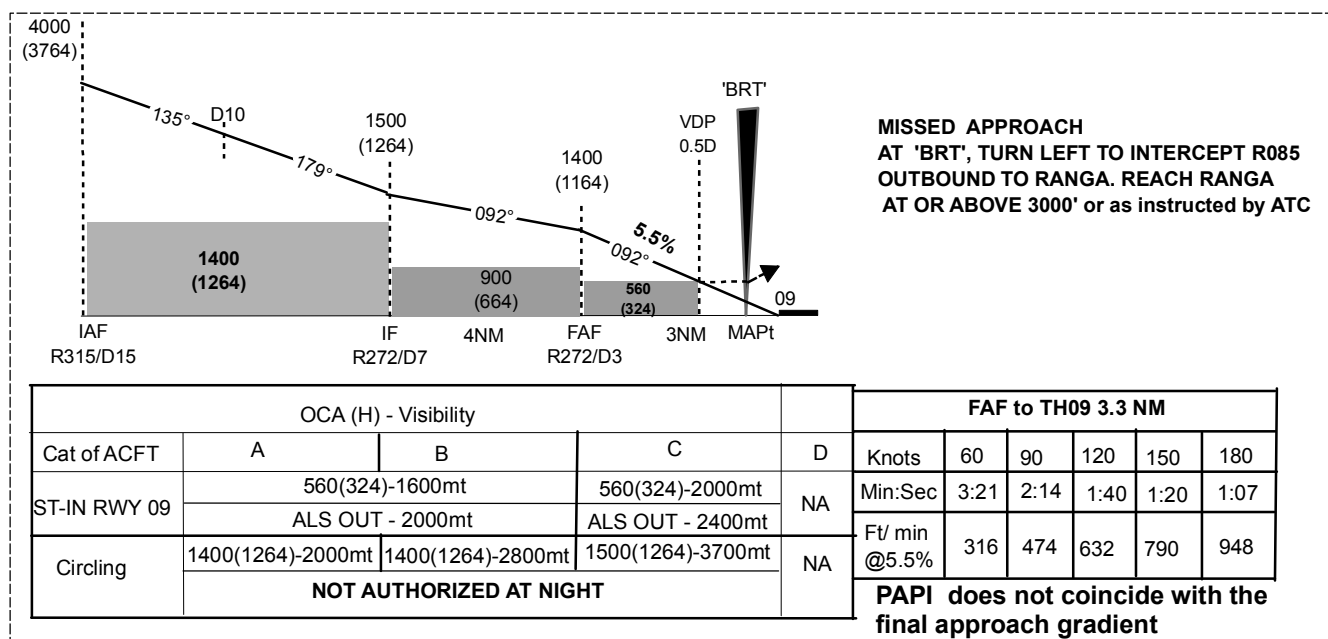
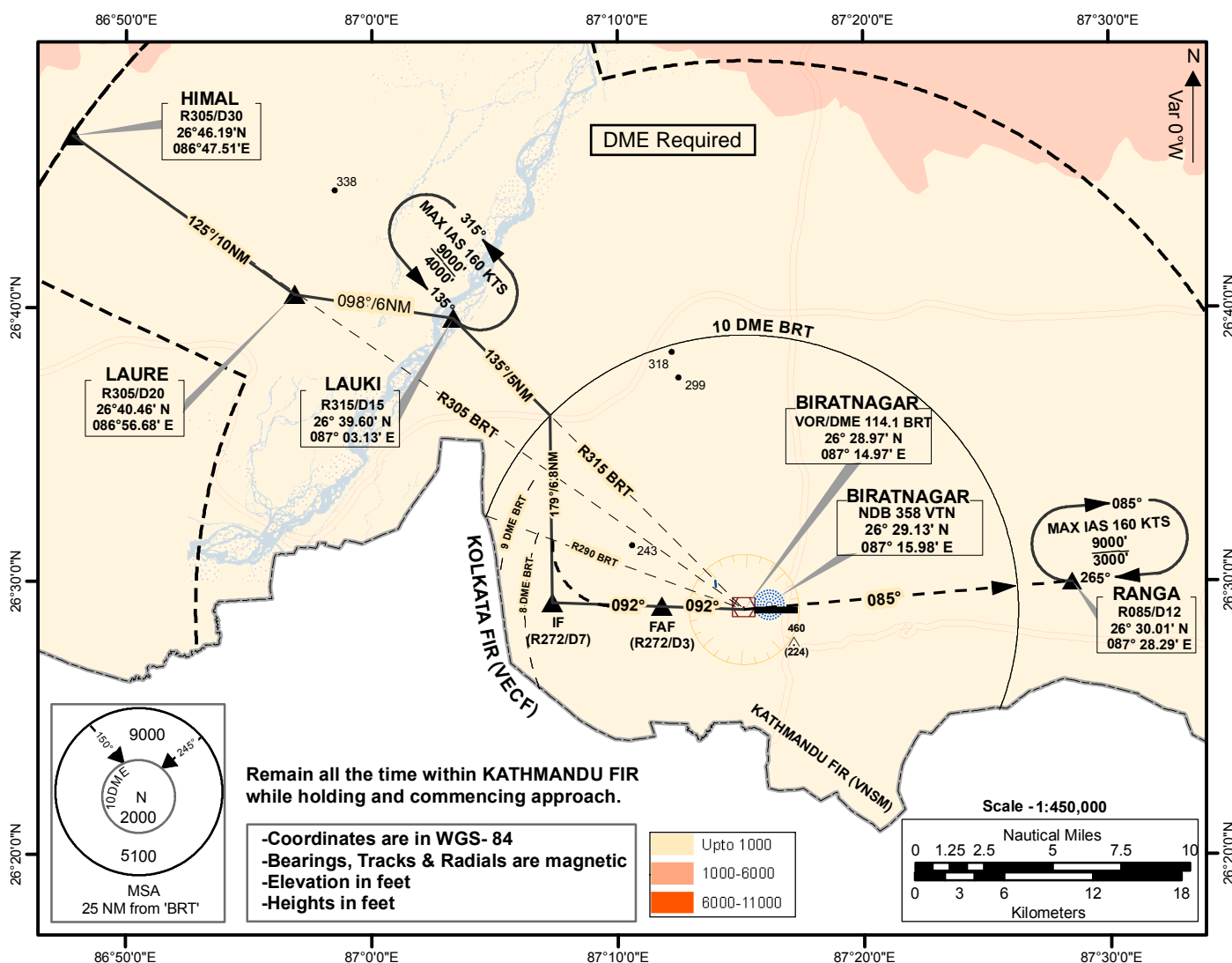
TWR 123.8

BIRATNAGAR, NEPAL
Biratagar Airport
NDB RWY 09
NDB 'VTN' 358



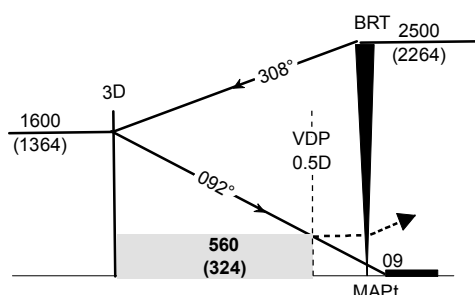
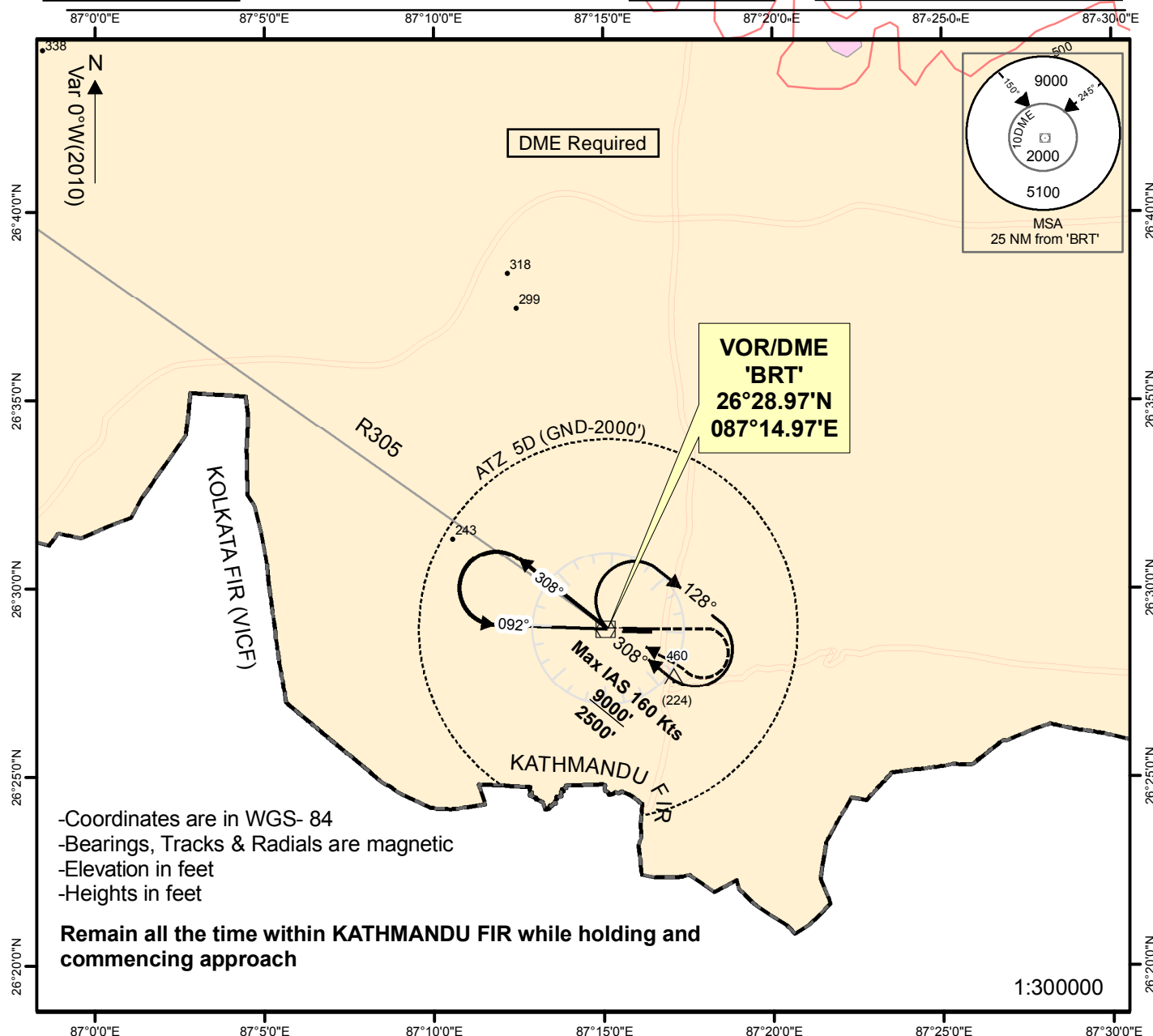
INSTRUMENT
APPROACH
CHART - ICAOAERODROME ELEV 236'
TRANS LEVEL: FL150
TRANS ALT: 13500 ft.
Mag Var. 0°W (2010)

TWR 123.8

BIRATNAGAR, NEPAL
Biratnagar Airport
VOR Z RWY 09
VOR 'BRT' 114.1

INSTRUMENT
APPROACH
CHART - ICAOAERODROME ELEV 236'
TRANS LEVEL: FL150
TRANS ALT: 13500 ft.
Mag Var. 0°W (2010)

TWR 123.8

BIRATNAGAR, NEPAL
Biratnagar Airport
VOR Y RWY 09
VOR 'BRT' 114.1

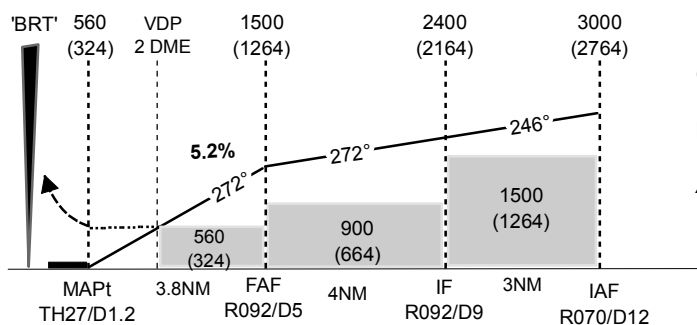
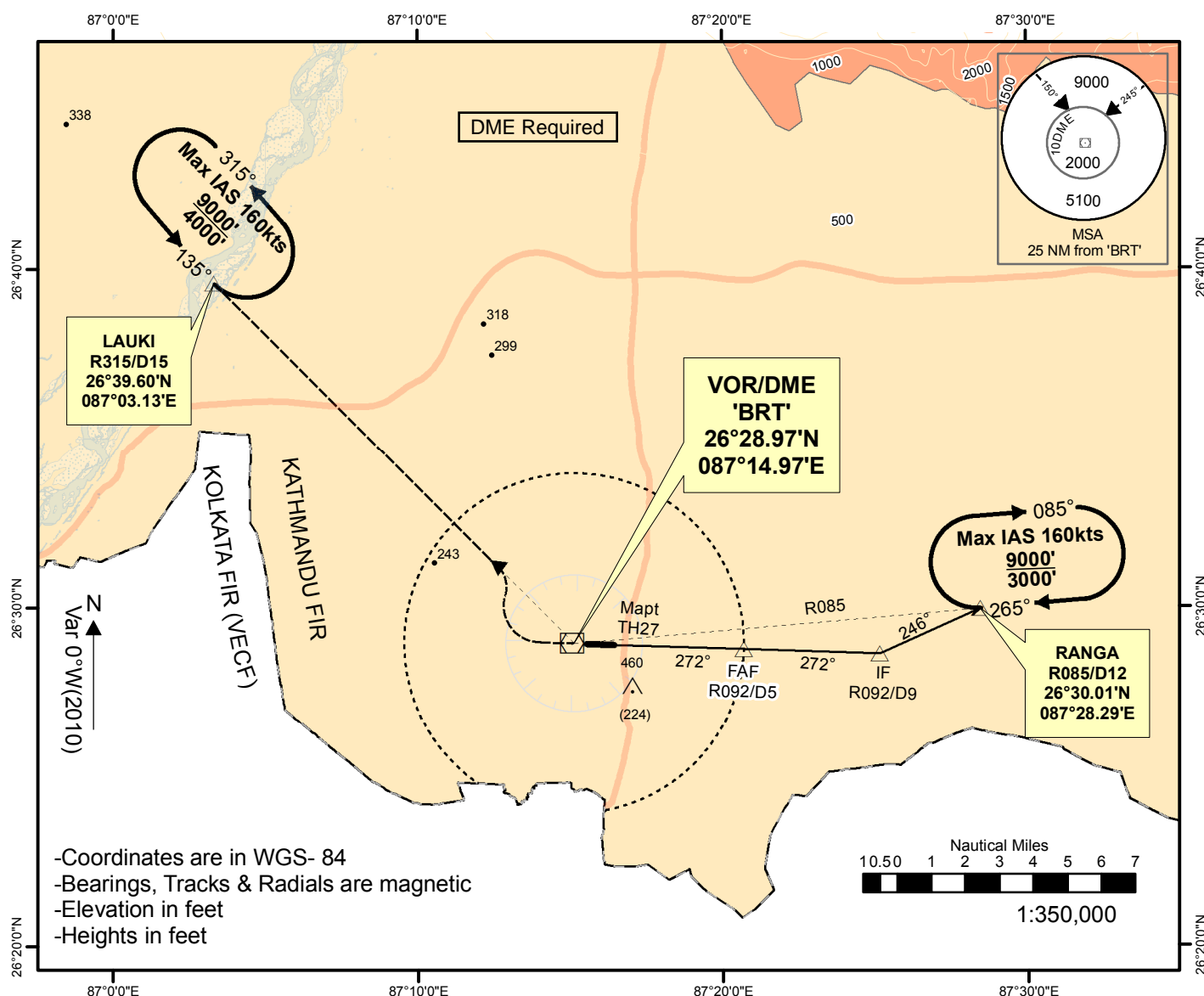
MISSED APPROACH
CLIMB STRAIGHT AHEAD TO 1000'. TURN RIGHT
TO JOIN 'BRT' HOLDING PATTERN. REACH
'BRT' AT OR ABOVE 2500'

**PAPI does not coincide with the
final approach gradient**

OCA (H) - Visibility				
Cat of ACFT	A	B	C	D
ST-IN RWY 09	560(324)-1600mt		560(324)-2000mt	NA
	ALS OUT - 2000mt		ALS OUT - 2400mt	
Circling	1400(1264)-2000mt	1400(1264)-2800mt	1500(1264)-3700mt	
	NOT AUTHORIZED AT NIGHT			

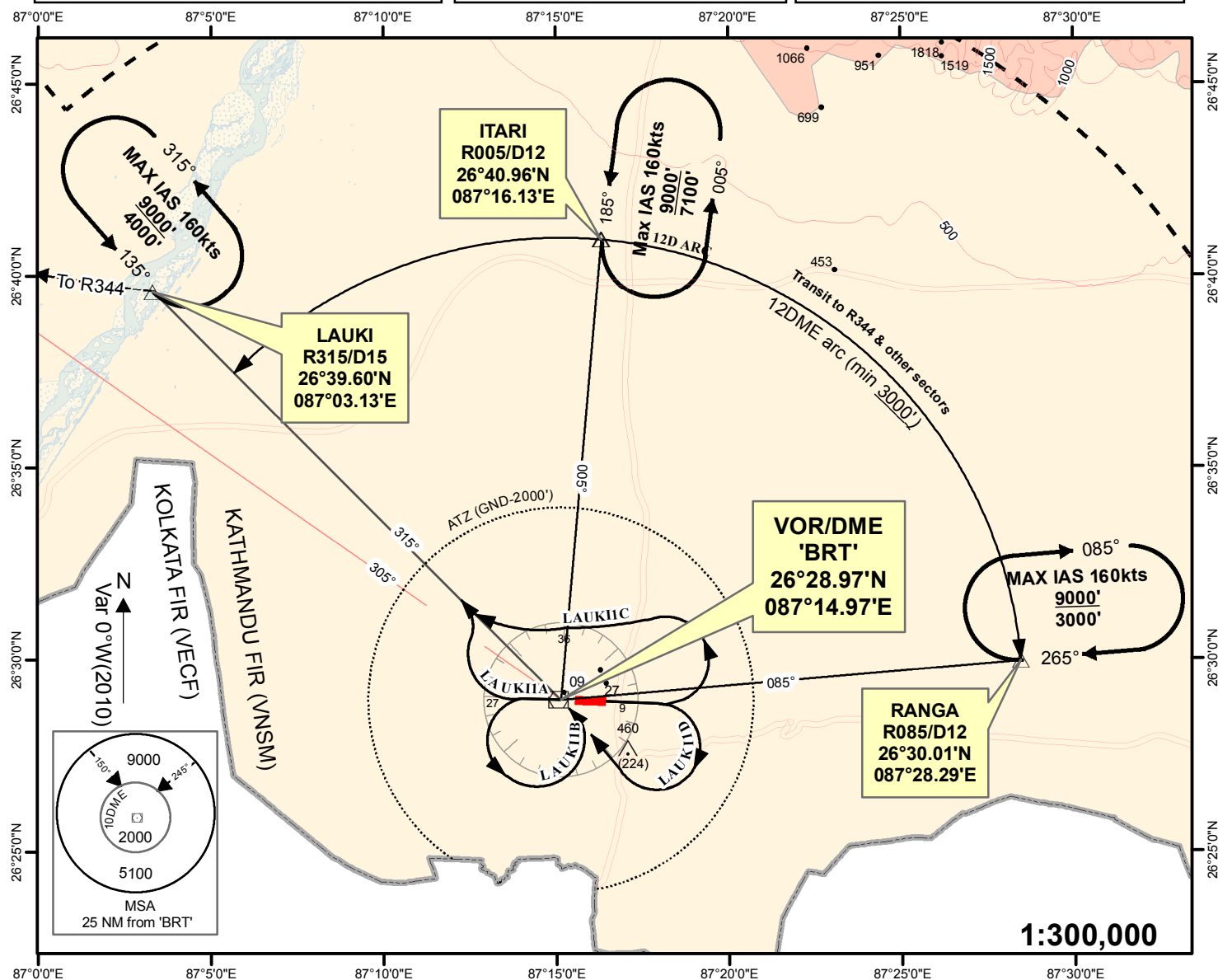
INSTRUMENT
APPROACH
CHART - ICAOAERODROME ELEV 236'
TRANS LEVEL: FL150
TRANS ALT: 13500 ft.
Var 0°W (2010)

TWR 123.8

BIRATNAGAR, NEPAL
Biratnagar Airport
VOR RWY 27
VOR 'BRT' 114.1

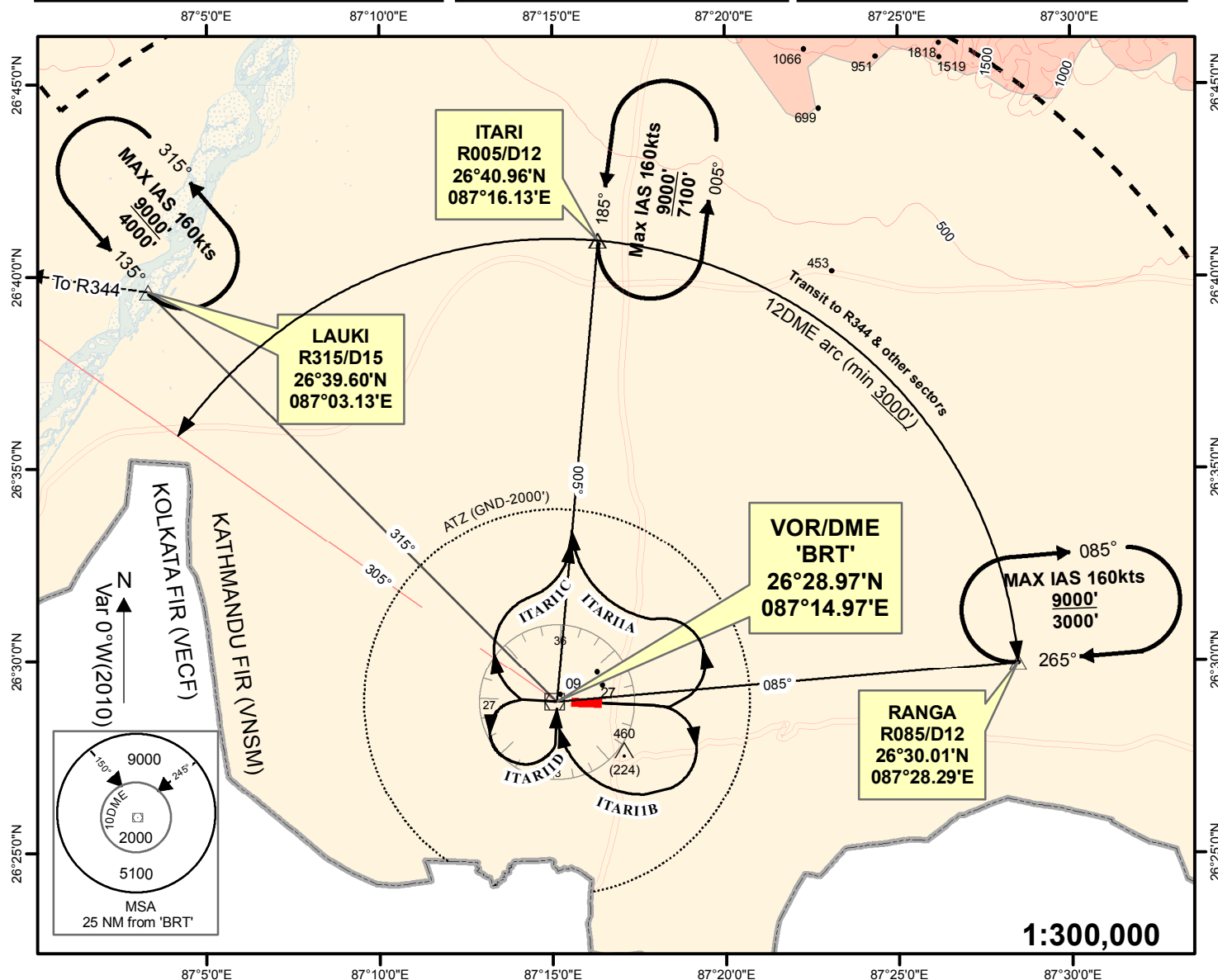
MISSED APPROACH
CLIMB STRAIGHT AHEAD TO 'BRT'. TURN
RIGHT TO INTERCEPT R315 OUTBOUND TO
LAUKI. REACH LAUKI AT OR ABOVE 4000'.
**THIS PROCEDURE REQUIRES A MISSED
APPROACH GRADIENT OF 4.8%**

OCA (H) - Visibility					FAF to TH27 3.8 NM					
Cat of ACFT	A	B	C	D	Knots	60	90	120	150	180
ST-IN RWY 27	560(324)-2000mt		560(324)-2400mt	NA	Min:Sec	3:50	2:33	1:55	1:32	1:17
Circling	1400(1264)-2000mt	1400(1264)-2800mt	1500(1264)-3700mt	NA	Ft/ min	316	474	632	790	948
	NOT AUTHORIZED AT NIGHT									

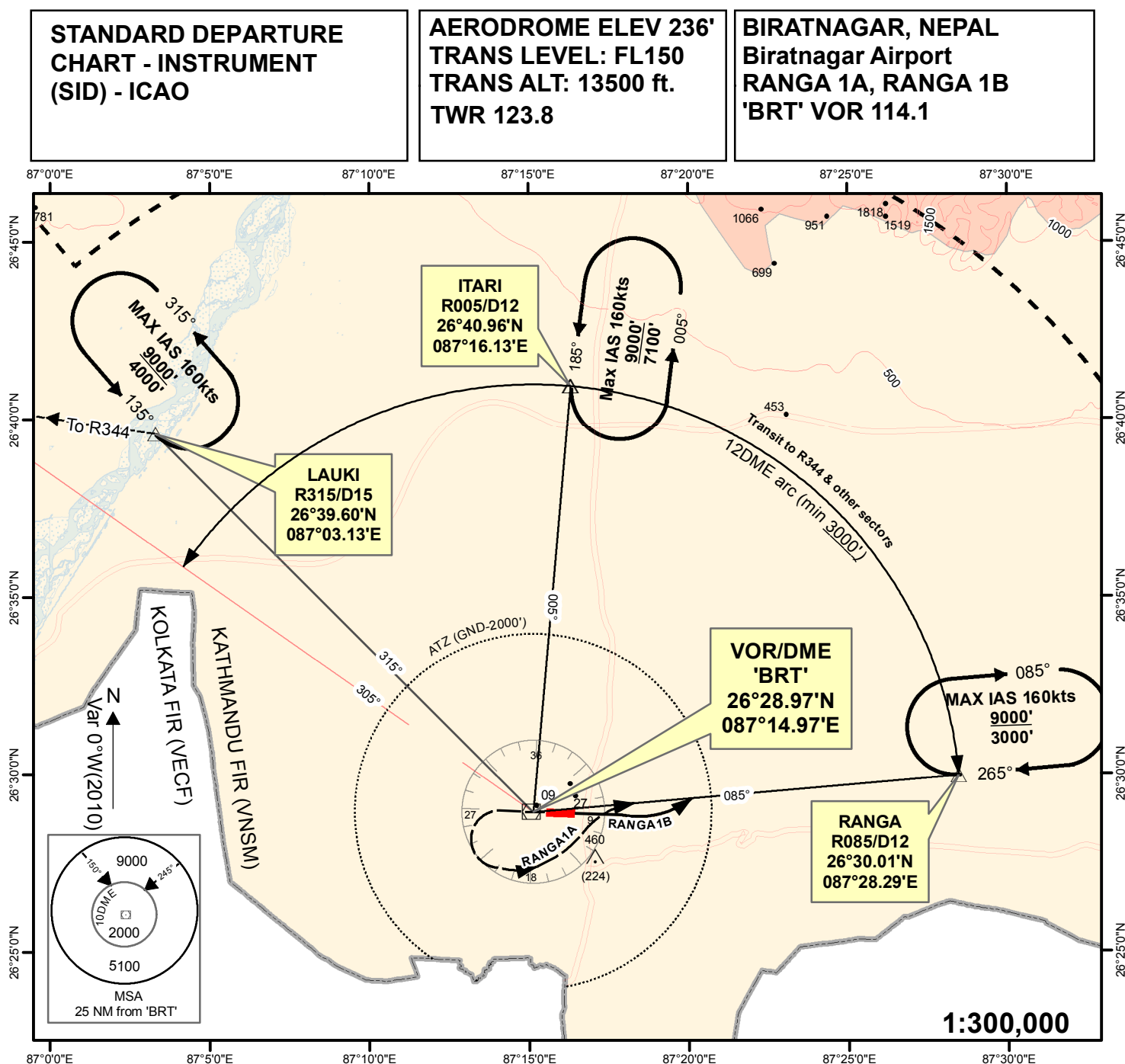
**STANDARD DEPARTURE
CHART - INSTRUMENT
(SID) - ICAO****AERODROME ELEV 236'
TRANS LEVEL: FL150
TRANS ALT: 13500 ft.
TWR 123.8****BIRATNAGAR, NEPAL
Biratnagar Airport
LAUKI 1A, LAUKI 1B,
LAUKI 1C, LAUKI 1D
'BRT' VOR 114.1****Minimum visibility required - 1600 m**

RWY 27	LAUKI 1A PDG = 5% Max IAS 180Kts CLIMB STRAIGHT AHEAD. AT 1DME, TURN RIGHT TO INTERCEPT R315 OUTBOUND TO LAUKI (R315/D15) REACH LAUKI AT OR ABOVE 4000' LAUKI 1B PDG = 5% Max IAS 180Kts CLIMB STRAIGHT AHEAD. AT 1DME, TURN LEFT (REMAINING WITHIN 4 DME ARC) TO 'BRT'. FOLLOW OUTBOUND R315 TO LAUKI (R315/D15). REACH LAUKI AT OR ABOVE 4000'
RWY 09	LAUKI 1C PDG = 5% Max IAS 180Kts CLIMB STRAIGHT AHEAD. AT 2.5DME, TURN LEFT TO INTERCEPT R315 OUTBOUND TO LAUKI (R315/D15) REACH LAUKI AT OR ABOVE 4000' LAUKI 1D PDG = 5% Max IAS 180Kts CLIMB STRAIGHT AHEAD. AT 2.5DME, TURN RIGHT (REMAINING WITHIN 4 DME ARC) TO INTERCEPT R315 TO 'BRT'. FOLLOW OUTBOUND R315 TO LAUKI (R315/D15). REACH LAUKI AT OR ABOVE 4000'

Note: At LAUKI climb to 5000 ft then set course to R344 via LAURE at 4% climb gradient till reaching MEA.

**STANDARD DEPARTURE
CHART - INSTRUMENT
(SID) - ICAO****AERODROME ELEV 236'
TRANS LEVEL: FL150
TRANS ALT: 13500 ft.
TWR 123.8****BIRATNAGAR, NEPAL
Biratnagar Airport
ITARI 1A, ITARI 1B,
ITARI 1C, ITARI 1D
'BRT' VOR 114.1****Minimum visibility required - 1600 m**

RWY 27	<p>ITARI 1C PDG = 9% Max IAS 180Kts</p> <p>CLIMB STRAIGHT AHEAD. AT 1DME, TURN RIGHT TO INTERCEPT R005 TO 'ITARI' (R005/D12). REACH ITARI AT OR ABOVE 7100'</p> <p>ITARI 1D PDG = 7% Max IAS 180Kts</p> <p>CLIMB STRAIGHT AHEAD. AT 1DME, TURN LEFT (REMAINING WITHIN 4 DME ARC) TO 'BRT'. THEN INTERCEPT R005 TO 'ITARI' (R005/D12). REACH ITARI AT OR ABOVE 7100'</p>
RWY 09	<p>ITARI 1A PDG = 9% Max IAS 180Kts</p> <p>CLIMB STRAIGHT AHEAD. AT 2.5DME, TURN LEFT TO INTERCEPT R005 TO 'ITARI' (R005/D12). REACH ITARI AT OR ABOVE 7100'</p> <p>ITARI 1B PDG = 7% Max IAS 180Kts</p> <p>CLIMB STRAIGHT AHEAD. AT 2.5DME, TURN RIGHT (REMAINING WITHIN 4 DME ARC) TO 'BRT'. THEN INTERCEPT R005 TO 'ITARI' (R005/D12). REACH ITARI AT OR ABOVE 7100'</p>



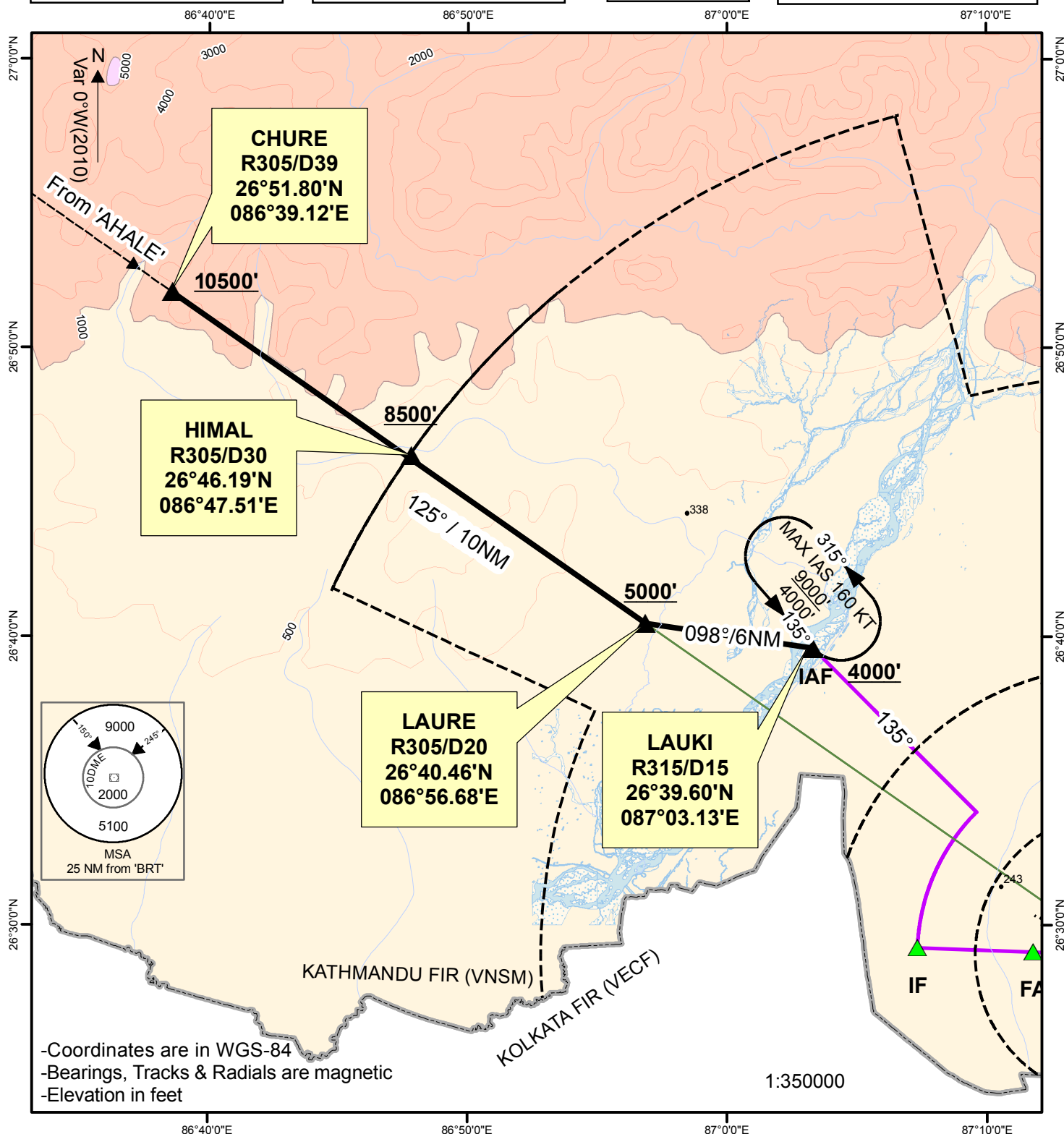
RWY 27	RANGA 1A PDG = 5% Max IAS 180Kts CLIMB STRAIGHT AHEAD. AT 1DME, TURN LEFT (REMAINING WITHIN 4D ARC) TO INTERCEPT R085 OUTBOUND TO RANGA(R085/D12). REACH RANGA AT OR ABOVE 3000'
RWY 09	RANGA 1B (PDG 4%) CLIMB STRAIGHT AHEAD TO INTERCEPT R085 TO RANGA (R085/D12). REACH RANGA AT OR ABOVE 3000'

STANDARD ARRIVAL
CHART - INSTRUMENT
(STAR) - ICAO

AERODROME ELEV 236'
TRANS LEVEL: FL150
TRANS ALT: 13500 ft.
Var 0°W (2010)

TWR 123.8

BIRATNAGAR, NEPAL
Biratnagar Airport
CHURE ARRIVAL
VOR 'BRT' 114.1



Routing: From 'CHURE'(R305/D39 'BRT'), track to 'LAURE' (R305/D20 'BRT') via HIMAL then track H098° to 'LAUKI' (R315/D15 'BRT').

Altitude: Maintain A105 or above till 'CHURE', Then descend to 8500' to 'HIMAL'. Reach 'LAURE' at or above 5000' then descend to 4000' to LAUKI

RNAV GNSS approach procedure at BIRATNAGAR AIRPORT (VNVT)

1. INTRODUCTION

- 1.1 The following RNP Approach (RNAV GNSS) Procedure is designed for VNVT in accordance with the criteria as stipulated in the ICAO PANS-OPS (DOC 8168) Vol. II.
- 1.2 The RNAV (GNSS) Instrument Approach Procedure to VNVT is designed to enhance the safety and efficiency of the aircraft operations with an alternative approach procedure to access the airport.
- 1.3 This procedure provides an alternate to the existing VNVT VORDME z RWY 09 approach procedure to the aircraft with the RNP APCH capability
- 1.4 This RNAV GNSS approach procedure along with RNP1 STAR has been designed with LNAV Specifications only and utilizes GNSS as primary navigation system as stipulated in ICAO PBN Manual DOC 9613.
- 1.5 A full arrival, approach and missed approach trajectories have been designed. However, existing conventional holdings-LAUKI and RANGA shall be used for RNP approach and missed approach.

2. APPROVED USERS, EQUIPMENT AND OPERATIONS

- 2.1 For the RNAV (GNSS) Approach Procedure, the operators shall ensure that they hold the all necessary operational approvals from Civil Aviation Authority of Nepal (CAAN).
- 2.2 The aircraft shall be equipped with GNSS as specified in Nepalese Flight Operations Requirements (FOR) and governed by the AIC 001/2011 dated 01 August 2011 (ATS Requirements for PBN in Nepalese Airspace)
- 2.3 All necessary navigation system are to installed onboard so as to keep the track keeping accuracy while commencing RNP1, RNP Approach and associated Missed Approach.
- 2.4 Before commencing the procedure, pilot in command must ensure that the navigation database is current and the aircraft's capability of conducting the procedure like GNSS availability, system performance, etc.

3. NAMING OF RNAV (GNSS) APPROACH PROCEDURES

There is one RNP1 STAR and one RNP Approach (RNAV GNSS-LNAV only) procedure to Biratnagar Runway 09 and are named in accordance with the ICAO naming convention as tabulated below.

RWY	STAR	RNP Approach
09	CHURE 1	RNAV (GNSS) RWY09

4. RNP CAPABILITY LOST

If the RNP APCH capability is lost, ATC shall be informed as soon as possible the alternate course of action from the pilots of the concerned aircraft.

5. List of Waypoint

W/P ID	Latitude	Longitude
CHURE	26°51'48.000" N	086°39'07.000" E
HIMAL	26°46'05.314" N	086°47'26.158" E
LAUKI (IAF)	26°39'33.732" N	087°03'05.079" E
INAWA	26°37'26.602" N	087°05'27.702" E
VT102 (IF)	26°29'10.113" N	087°08'17.010" E
FAF) VT104 (26°29'04.213" N	087°11'37.515" E
VT106 (MAPT)	26°28'58.313" N	087°14'58.017" E
RANGA	26°30'03.437" N	087°28'17.242" E

6. STAR coding Table

W/P ID	W/P Description	Path Terminator	TD	CRS (°) mag?	DIST (NM)	ALT (FT)	SPD (KTS)	Remarks
CHURE	-	IF				AA 10500		
HIMAL	-	TF		127°	9.3	AA 8500		
LAUKI	-	TF		115 °	15.3	AA 4000	Max IAS 160Kts	

7. RNP APCH coding Table

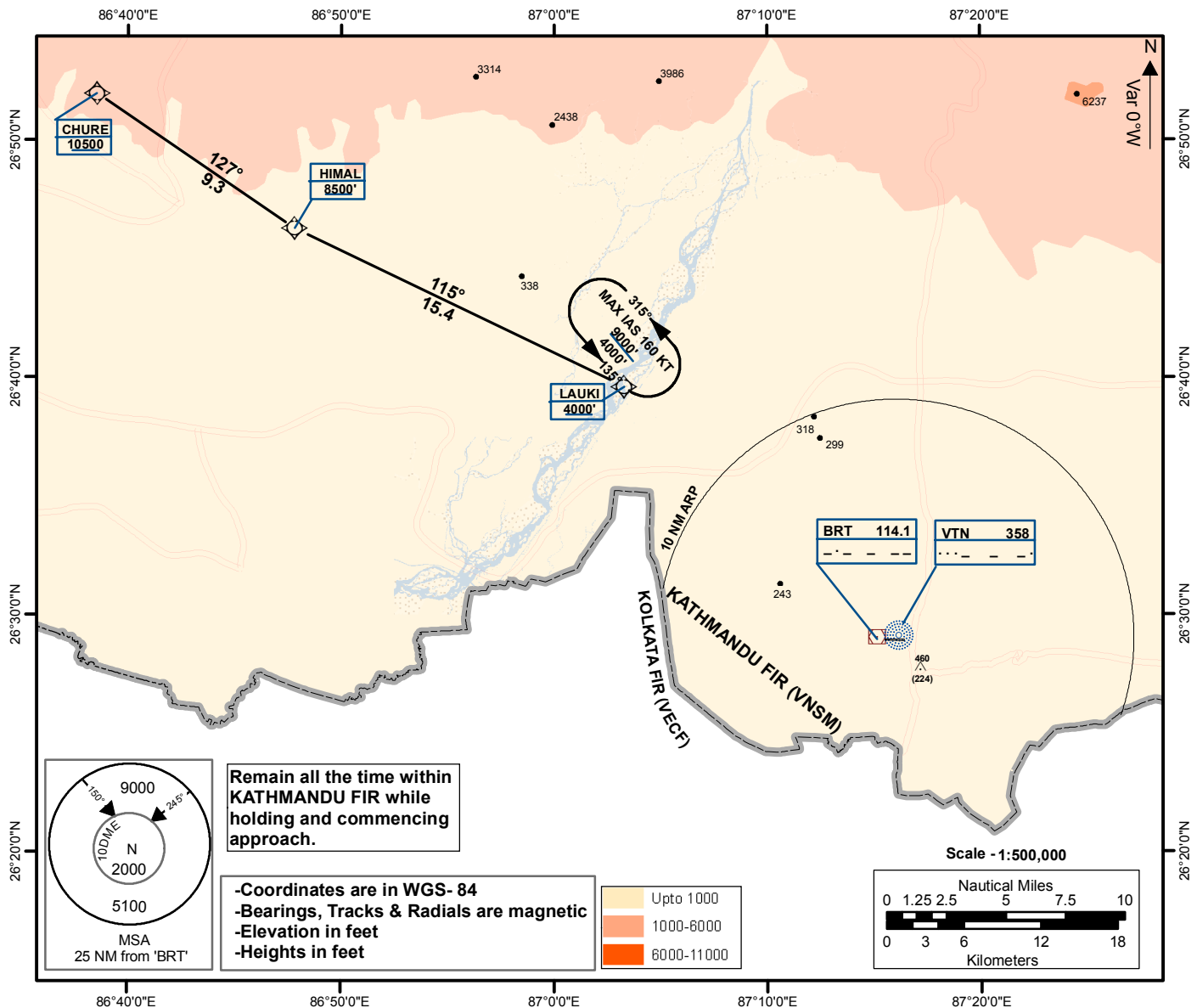
W/P ID	W/P Description	Path Terminator	TD	CRS (°) mag?	DIST (NM)	ALT (FT)	SPD (KTS)	Remarks
LAUKI (IAF)	-	IF				AA 4000		
INAWA	-	TF	R	135°	3			
VT102 (IF)	-	TF	L	163°	8.6	AA 1500	Max IAS 180kts	
VT104 (FAF)	-	TF		092°	3	1400		
VT106 (MAPT)	Y	TF		092°	3	0560		
RANGA	-	TF	L	085°	12	AA 3000		
RANGA	-	HM	R			AA 3000	Max IAS 160kts	

**STANDARD
ARRIVAL CHART -
INSTRUMENT
(STAR) - ICAO**

**AERODROME ELEV 236'
TRANS LEVEL: FL150
TRANS ALT: 13500 ft.
Mag Var. 0°W (2010)**

TWR 123.8

**BIRATNAGAR, NEPAL
Biratnagar Airport
BASIC RNP-1 STAR
CHURE 1 ARRIVAL**



CHURE 1 ARRIVAL

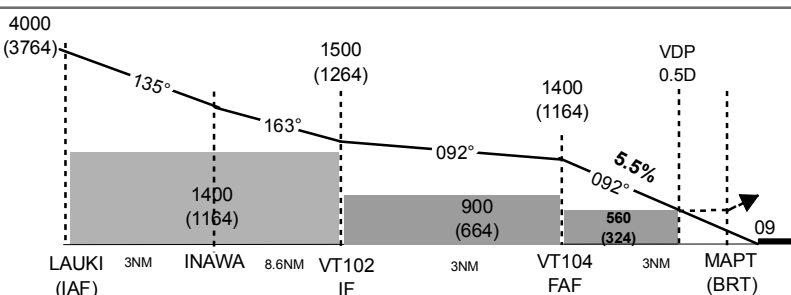
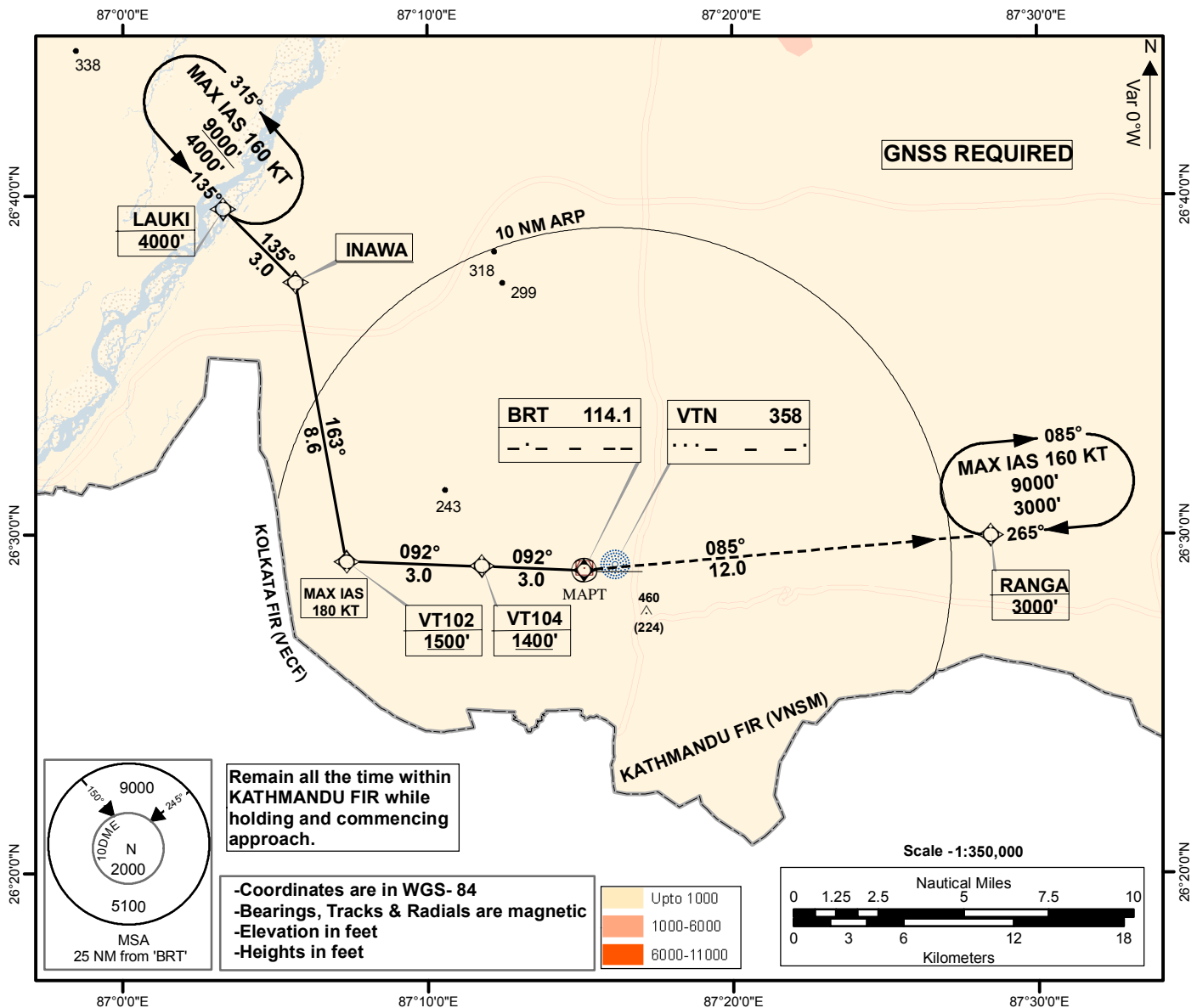
FROM CHURE DESCEND HDG 127° TO HIMAL AT OR ABV 8500 FT.
FROM HIMAL DESCEND HDG 115° TO LAUKI AT OR ABV 4000 FT.

**INSTRUMENT
APPROACH
CHART - ICAO**

**AERODROME ELEV 236'
TRANS LEVEL: FL150
TRANS ALT: 13500 ft.
Mag Var. 0°W (2010)**

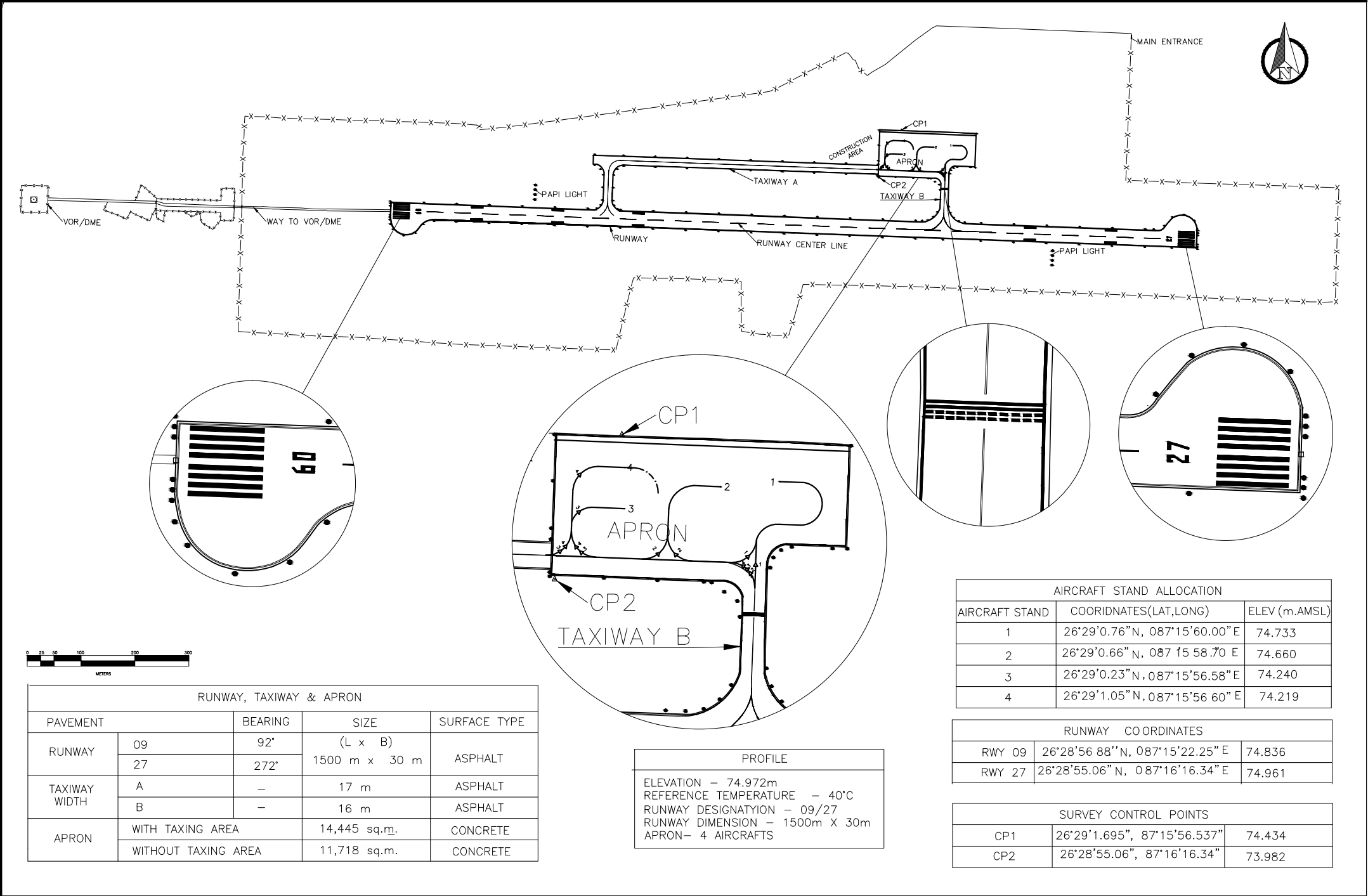
TWR 123.8

**BIRATNAGAR, NEPAL
Biratnagar Airport
RNAV (GNSS) Rwy 09**



**MISSED APPROACH: (Climb Gradient 4%).
AT MAPT, TURN LEFT HDG 085° TO RANGA.
REACH RANGA AT OR ABOVE 3000' OR AS
INSTRUCTED BY ATC.**

OCA (H) - Visibility					FAF to TH09 3.3 NM					
Cat of ACFT	A	B	C	D	Knots	60	90	120	150	180
ST-IN RWY 09	560(324)-1600mt		560(324)-2000mt	NA	Min:Sec	3:21	2:14	1:40	1:20	1:07
	ALS OUT - 2000mt		ALS OUT - 2400mt		Ft/ min @5.5%	316	474	632	790	948
Circling	1400(1264)-2000mt	1400(1264)-2800mt	1500(1264)-3700mt	NA	PAPI does not coincide with the final approach gradient					
NOT AUTHORIZED AT NIGHT										



RUNWAY, TAXIWAY & APRON				
PAVEMENT		BEARING	SIZE	SURFACE TYPE
RUNWAY	09	92°	(L x B) 1500 m x 30 m	ASPHALT
	27	272°		
TAXIWAY WIDTH	A	–	17 m	ASPHALT
	B	–	16 m	ASPHALT
APRON	WITH TAXING AREA		14,445 sq.m.	CONCRETE
	WITHOUT TAXING AREA		11,718 sq.m.	CONCRETE

AIRCRAFT STAND ALLOCATION		
AIRCRAFT STAND	COORDINATES(LAT, LONG)	ELEV (m.AMSL)
1	26°29'0.76"N, 087°15'60.00"E	74.733
2	26°29'0.66"N, 087°15'58.70"E	74.660
3	26°29'0.23"N, 087°15'56.58"E	74.240
4	26°29'1.05"N, 087°15'56.60"E	74.219

RUNWAY COORDINATES		
RWY 09	26°28'56.88"N, 087°15'22.25"E	74.836
RWY 27	26°28'55.06"N, 087°16'16.34"E	74.961

SURVEY CONTROL POINTS		
CP1	26°29'1.695", 87°15'56.537"	74.434
CP2	26°28'55.06", 87°16'16.34"	73.982